

Anti-REG1B antibody

Cat. No.	ml225761
Package	25 µl/100 µl/200 µl
Storage	-20°C, pH7.4 PBS, 0.05% NaN ₃ , 40% Glycerol

Product overview

Description	Anti-REG1B rabbit polyclonal antibody
Applications	ELISA, WB, IHC
Immunogen	Fusion protein of human REG1B
Reactivity	Human, Mouse, Rat
Content	0.96 mg/ml
Host species	Rabbit
Ig class	Immunogen-specific rabbit IgG
Purification	Antigen affinity purification

Target information

Symbol	REG1B
Full name	regenerating family member 1 beta

Synonyms REGH; REGL; PSPS2; REGI-BETA

Swissprot P48304

Target Background

This gene is a type I subclass member of the Reg gene family. The Reg gene family is a multigene family grouped into four subclasses, types I, II, III and IV based on the primary structures of the encoded proteins. This gene encodes a protein secreted by the exocrine pancreas that is highly similar to the REG1A protein. The related REG1A protein is associated with islet cell regeneration and diabetogenesis, and may be involved in pancreatic lithogenesis. Reg family members REG1A, REGL, PAP and this gene are tandemly clustered on chromosome 2p12 and may have arisen from the same ancestral gene by gene duplication.

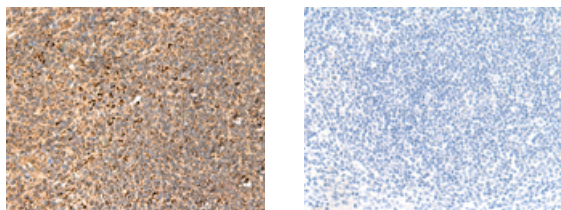
Applications

Immunohistochemistry

Predicted cell location: Cytoplasm

Positive control: Human tonsil

Recommended dilution: 50-300



The image on the left is immunohistochemistry of paraffin-embedded Human tonsil tissue using ml225761(REG1B Antibody) at dilution 1/55, on the right is treated with fusion protein. (Original magnification: ×200)

Western blotting

Predicted band size: 19 kDa

Positive control: Mouse liver tissue, Mouse Pancreas tissue, Rat Pancreas tissue and Human pancreas tissues lysates

Recommended dilution: 1000-5000

Gel: 12%SDS-PAGE

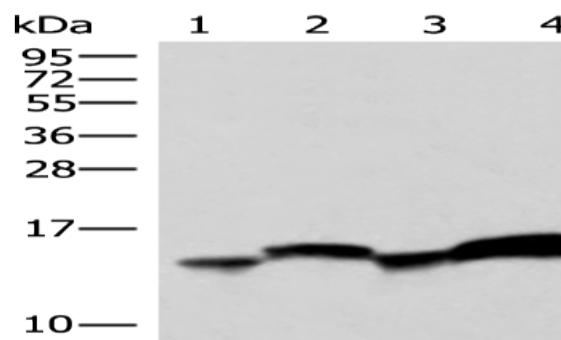
Lysate: 40 µg

Lane 1-4: Mouse liver tissue, Mouse Pancreas tissue, Rat Pancreas tissue
and Human pancreas tissues lysates

Primary antibody: ml225761(REG1B Antibody) at dilution 1/800

Secondary antibody: Goat anti rabbit IgG at 1/5000 dilution

Exposure time: 20 seconds



ELISA

Recommended dilution: 5000-10000

联系电话: 4008-898-798, 021-61725725

联系QQ: 2881505695, 2881505696

邮箱: mlbio_cn@yeah.net

网址: www.mlbio.cn