

## Anti-RHAG antibody

<b>Cat. No.</b>	ml225857
<b>Package</b>	25 µl/100 µl/200 µl
<b>Storage</b>	-20°C, pH7.4 PBS, 0.05% NaN <sub>3</sub> , 40% Glycerol

### Product overview

<b>Description</b>	Anti-RHAG rabbit polyclonal antibody
<b>Applications</b>	ELISA, WB, IHC
<b>Immunogen</b>	Fusion protein of human RHAG
<b>Reactivity</b>	Human, Mouse
<b>Content</b>	2.34 mg/ml
<b>Host species</b>	Rabbit
<b>Ig class</b>	Immunogen-specific rabbit IgG
<b>Purification</b>	Antigen affinity purification

### Target information

<b>Symbol</b>	RHAG
<b>Full name</b>	Rh associated glycoprotein

**Synonyms** OHS; RH2; OHST; Rh50; CD241; RH50A; Rh50GP; SLC42A1

**Swissprot** Q02094

#### **Target Background**

The protein encoded by this gene is erythrocyte-specific and is thought to be part of a membrane channel that transports ammonium and carbon dioxide across the blood cell membrane. The encoded protein appears to interact with Rh blood group antigens and Rh30 polypeptides. Defects in this gene are a cause of regulator type Rh-null hemolytic anemia (RHN), or Rh-deficiency syndrome.

## Applications

### Immunohistochemistry

Predicted cell location: Cell membrane

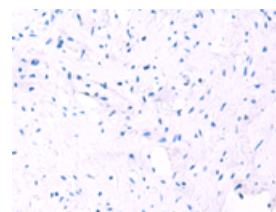
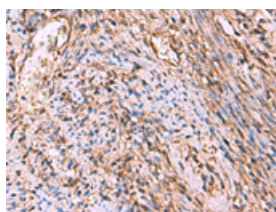
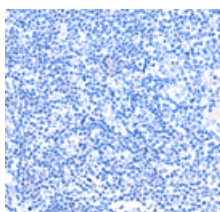
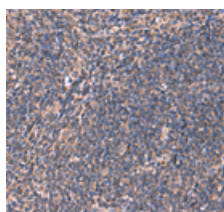
Predicted cell location: Cell membrane

Positive control: Human tonsil

Positive control: Human cervical cancer

Recommended dilution: 50-300

Recommended dilution: 50-300



The image on the left is immunohistochemistry of paraffin-embedded Human tonsil tissue using ml225857(RHAG Antibody) at dilution 1/130, on the right is treated with fusion protein. (Original magnification: ×200)

The image on the left is immunohistochemistry of paraffin-embedded Human cervical cancer tissue using ml225857(RHAG Antibody) at dilution 1/130, on the right is treated with fusion protein. (Original magnification: ×200)

### Western blotting

Predicted band size: 44 kDa

Positive control: Hela, NIH/3T3, A172, 293T, K562 and HepG2 cell lysates

Recommended dilution: 1000-5000

Gel: 8%SDS-PAGE

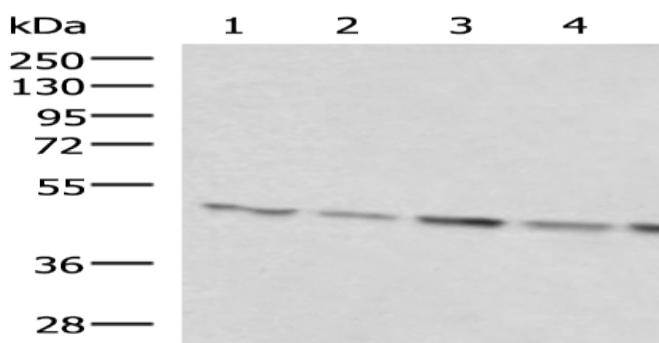
Lysate: 40 µg

Lane 1-6: Hela, NIH/3T3, A172, 293T, K562 and HepG2 cell  
lysates

Primary antibody: ml225857(RHAG Antibody) at dilution 1/1600

Secondary antibody: Goat anti rabbit IgG at 1/5000 dilution

Exposure time: 30 seconds



## ELISA

Recommended dilution: 5000-10000

联系电话: 4008-898-798, 021-61725725

联系QQ: 2881505695, 2881505696

邮箱: [mlbio\\_cn@yeah.net](mailto:mlbio_cn@yeah.net)

网址: [www.mlbio.cn](http://www.mlbio.cn)