

Anti-SCCPDH antibody

| | |
|-----------------|---|
| Cat. No. | ml225872 |
| Package | 25 µl/100 µl/200 µl |
| Storage | -20°C, pH7.4 PBS, 0.05% NaN ₃ , 40% Glycerol |

Product overview

| | |
|---------------------|--|
| Description | Anti-SCCPDH rabbit polyclonal antibody |
| Applications | ELISA, WB, IHC |
| Immunogen | Fusion protein of human SCCPDH |
| Reactivity | Human, Mouse, Rat |
| Content | 1.5 mg/ml |
| Host species | Rabbit |
| Ig class | Immunogen-specific rabbit IgG |
| Purification | Antigen affinity purification |

Target information

| | |
|------------------|---------------------------------------|
| Symbol | SCCPDH |
| Full name | saccharopine dehydrogenase (putative) |

Synonyms NET11; CGI-49

Swissprot Q8NBX0

Target Background

SCCPDH belongs to the saccharopine dehydrogenase family. The exact function of SCCPDH remains unknown.

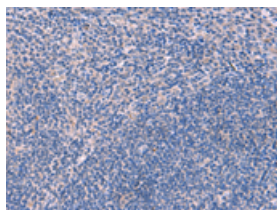
Applications

Immunohistochemistry

Predicted cell location: Cytoplasm or Nucleus

Positive control: Human tonsil

Recommended dilution: 50-300

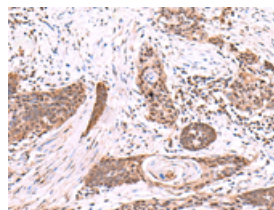


The image on the left is immunohistochemistry of paraffin-embedded Human tonsil tissue using ml225872(SCCPDH Antibody) at dilution 1/85, on the right is treated with fusion protein. (Original magnification: $\times 200$)

Predicted cell location: Cytoplasm or Nucleus

Positive control: Human esophagus cancer

Recommended dilution: 50-300



The image on the left is immunohistochemistry of paraffin-embedded Human esophagus cancer tissue using ml225872(SCCPDH Antibody) at dilution 1/85, on the right is treated with fusion protein. (Original magnification: $\times 200$)

Western blotting

Predicted band size: 47 kDa

Positive control: Human fetal liver tissue, PC-3 and A172 cell lysates

Recommended dilution: 1000-5000

Gel: 8%SDS-PAGE

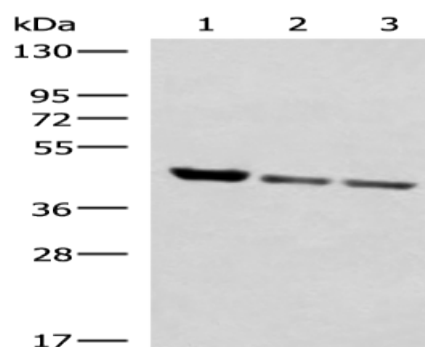
Lysate: 40 µg

Lane 1-3: Human fetal liver tissue, PC-3 and A172 cell lysates

Primary antibody: ml225872(SCCPDH Antibody) at dilution 1/1000

Secondary antibody: Goat anti rabbit IgG at 1/5000 dilution

Exposure time: 1 minute



ELISA

Recommended dilution: 5000-10000

联系电话: 4008-898-798, 021-61725725

联系QQ: 2881505695, 2881505696

邮箱: mlbio_cn@yeah.net

网址: www.mlbio.cn