

Anti-GALK2 antibody

Cat. No.	ml225898
Package	25 µl/100 µl/200 µl
Storage	-20°C, pH7.4 PBS, 0.05% NaN ₃ , 40% Glycerol

Product overview

Description	Anti-GALK2 rabbit polyclonal antibody
Applications	ELISA, WB, IHC
Immunogen	Fusion protein of human GALK2
Reactivity	Human, Mouse, Rat
Content	1.68 mg/ml
Host species	Rabbit
Ig class	Immunogen-specific rabbit IgG
Purification	Antigen affinity purification

Target information

Symbol	GALK2
Full name	galactokinase 2

Synonyms	GK2
Swissprot	Q01415

Target Background

This gene encodes a highly efficient N-acetylgalactosamine (GalNAc) kinase, which has galactokinase activity when galactose is present at high concentrations. The encoded protein is a member of the GHMP kinase family. Alternative splicing results in multiple transcript variants.

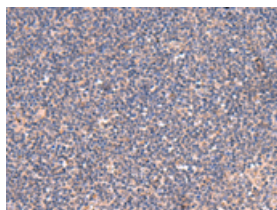
Applications

Immunohistochemistry

Predicted cell location: Cytoplasm

Positive control: Human tonsil

Recommended dilution: 50-300

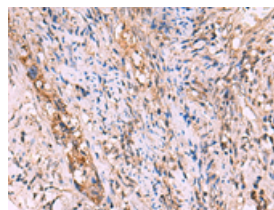


The image on the left is immunohistochemistry of paraffin-embedded Human tonsil tissue using ml225898(GALK2 Antibody) at dilution 1/95, on the right is treated with fusion protein. (Original magnification: $\times 200$)

Predicted cell location: Cytoplasm

Positive control: Human cervical cancer

Recommended dilution: 50-300



The image on the left is immunohistochemistry of paraffin-embedded Human cervical cancer tissue using ml225898(GALK2 Antibody) at dilution 1/95, on the right is treated with fusion protein. (Original magnification: $\times 200$)

Western blotting

Predicted band size: 50 kDa

Positive control: 293T cell lysate

Recommended dilution: 1000-5000

Gel: 8%SDS-PAGE

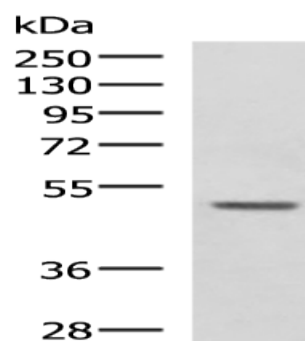
Lysate: 40 μ g

Lane: 293T cell lysate

Primary antibody: ml225898(GALK2 Antibody) at dilution 1/1350

Secondary antibody: Goat anti rabbit IgG at 1/5000 dilution

Exposure time: 1 minute



ELISA

Recommended dilution: 5000-10000

联系电话: 4008-898-798, 021-61725725

联系QQ: 2881505695, 2881505696

邮箱: mlbio_cn@yeah.net

网址: www.mlbio.cn