

Anti-KDM4D antibody

Cat. No.	ml122563
Package	25 µl/100 µl/200 µl
Storage	-20°C, pH7.4 PBS, 0.05% NaN ₃ , 40% Glycerol

Product overview

Description	Anti-KDM4D rabbit polyclonal antibody
Applications	ELISA, IHC
Immunogen	Fusion protein of human KDM4D
Reactivity	Human, Mouse, Rat
Content	0.3 mg/ml
Host species	Rabbit
Ig class	Immunogen-specific rabbit IgG
Purification	Antigen affinity purification

Target information

Symbol	KDM4D
Full name	lysine (K)-specific demethylase 4D
Synonyms	JMJD2D
Swissprot	Q6B0I6

Target Background

JMJD2D (Jumonji domain-containing protein 2D), also known as JHDM3D or KDM4D, is a 520 amino acid protein that belongs to the JHDM3 histone demethylase family. Localized to the nucleus, JMJD2D functions as a histone demethylase that removes specific methyl residues from Histone H3, thereby playing a crucial role in the histone code. JMJD2D binds iron as a cofactor and contains one JMJC domain and one JMJD domain, both of which are thought to exhibit enzymatic activity during chromatin remodeling events. In addition, JMJD2D forms a complex with the ligand-bound form of the androgen receptor (AR) and, through this interaction, activates AR expression. Overexpression of AR is associated with prostate cancer, suggesting that, via its ability to upregulate AR, JMJD2D may be involved in carcinogenesis.

订购热线: 4008-898-798

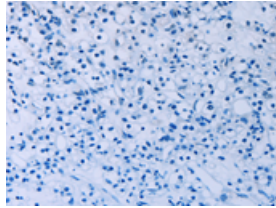
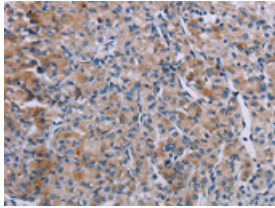
Applications

Immunohistochemistry

Predicted cell location: Cytoplasm

Positive control: Human prostate cancer

Recommended dilution: 25-100



The image on the left is immunohistochemistry of paraffin-embedded Human prostate cancer tissue using ml122563(KDM4D Antibody) at dilution 1/60, on the right is treated with fusion protein. (Original magnification: $\times 200$)

ELISA

Recommended dilution: 1000-2000

联系电话: 4008-898-798, 021-61725725

联系QQ: 2881505695, 2881505696

邮箱: mlbio_cn@yeah.net

网址: www.mlbio.cn