

Anti-KIF1C antibody

Cat. No.	ml122582
Package	25 µl/100 µl/200 µl
Storage	-20°C, pH7.4 PBS, 0.05% NaN ₃ , 40% Glycerol

Product overview

Description	Anti-KIF1C rabbit polyclonal antibody
Applications	ELISA, IHC
Immunogen	Fusion protein of human KIF1C
Reactivity	Human, Mouse, Rat
Content	0.6 mg/ml
Host species	Rabbit
Ig class	Immunogen-specific rabbit IgG
Purification	Antigen affinity purification

Target information

Symbol	KIF1C
Full name	kinesin family member 1C
Synonyms	SAX2; LTXS1; SATX2; SPAX2; SPG58
Swissprot	O43896

Target Background

The kinesins constitute a large family of microtubule-dependent motor proteins, which are responsible for the distribution of numerous organelles, vesicles and macromolecular complexes throughout the cell. Individual kinesin members play crucial roles in cell division, intracellular transport, and membrane trafficking events including endocytosis and transcytosis. KIF1C is a member of the KIF1/Unc104 family of kinesin-like proteins, which are involved in the transport of mitochondria or synaptic vesicles in axons. Human KIF1C maps to chromosome 17p13 and encodes a predicted 1,103 amino acid protein with abundant expression in heart and skeletal muscle. Tyrosine phosphorylation is a putative regulator of KIF1C mediated retrograde transport of Golgi vesicles to the endoplasmic reticulum. KIF1C is capable of forming homodimers and can noncovalently associate with 14-3-3 beta, gamma, epsilon and zeta. In mouse macrophages, KIF1C is required for anthrax lethal toxin resistance.

订购热线: 4008-898-798

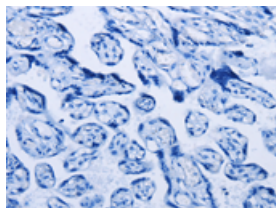
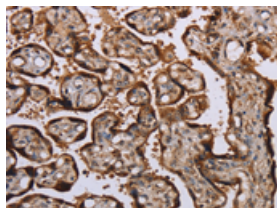
Applications

Immunohistochemistry

Predicted cell location: Cytoplasm

Positive control: Human placenta

Recommended dilution: 50-200

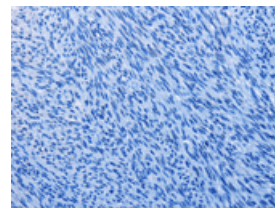
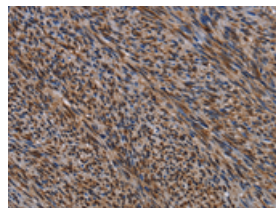


The image on the left is immunohistochemistry of paraffin-embedded Human placenta tissue using ml122582(KIF1C Antibody) at dilution 1/60, on the right is treated with fusion protein. (Original magnification: $\times 200$)

Predicted cell location: Cytoplasm

Positive control: Human sarcoma

Recommended dilution: 50-200



The image on the left is immunohistochemistry of paraffin-embedded Human sarcoma tissue using ml122582(KIF1C Antibody) at dilution 1/60, on the right is treated with fusion protein. (Original magnification: $\times 200$)

ELISA

Recommended dilution: 2000-5000

联系电话: 4008-898-798, 021-61725725

联系QQ: 2881505695, 2881505696

邮箱: mlbio_cn@yeah.net

网址: www.mlbio.cn