

## Anti-LCMT1 antibody

<b>Cat. No.</b>	ml122609
<b>Package</b>	25 µl/100 µl/200 µl
<b>Storage</b>	-20°C, pH7.4 PBS, 0.05% NaN <sub>3</sub> , 40% Glycerol

### Product overview

<b>Description</b>	Anti-LCMT1 rabbit polyclonal antibody
<b>Applications</b>	ELISA, IHC
<b>Immunogen</b>	Fusion protein of human LCMT1
<b>Reactivity</b>	Human, Rat
<b>Content</b>	0.2 mg/ml
<b>Host species</b>	Rabbit
<b>Ig class</b>	Immunogen-specific rabbit IgG
<b>Purification</b>	Antigen affinity purification

### Target information

<b>Symbol</b>	LCMT1
<b>Full name</b>	leucine carboxyl methyltransferase 1
<b>Synonyms</b>	LCMT; PPMT1; CGI-68
<b>Swissprot</b>	Q9UIC8

### Target Background

LCMT1 catalyzes the methylation of the carboxyl group of the C-terminal leucine residue (leu309) of the catalytic subunit of protein phosphatase-2A.

订购热线: 4008-898-798

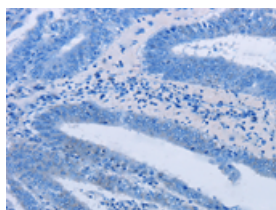
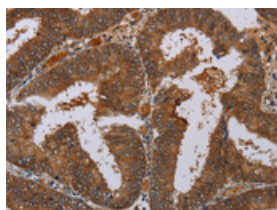
## Applications

### Immunohistochemistry

Predicted cell location: Cytoplasm

Positive control: Human colon cancer

Recommended dilution: 25-100

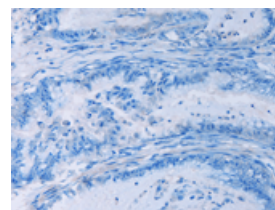
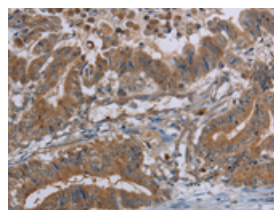


The image on the left is immunohistochemistry of paraffin-embedded Human colon cancer tissue using ml122609(LCMT1 Antibody) at dilution 1/20, on the right is treated with fusion protein. (Original magnification:  $\times 200$ )

Predicted cell location: Cytoplasm

Positive control: Human esophagus cancer

Recommended dilution: 25-100



The image on the left is immunohistochemistry of paraffin-embedded Human esophagus cancer tissue using ml122609(LCMT1 Antibody) at dilution 1/20, on the right is treated with fusion protein. (Original magnification:  $\times 200$ )

### ELISA

Recommended dilution: 1000-2000

联系电话: 4008-898-798, 021-61725725

联系QQ: 2881505695, 2881505696

邮箱: [mlbio\\_cn@yeah.net](mailto:mlbio_cn@yeah.net)

网址: [www.mlbio.cn](http://www.mlbio.cn)