

Anti-MAGEB10 antibody

Cat. No.	ml122648
Package	25 µl/100 µl/200 µl
Storage	-20°C, pH7.4 PBS, 0.05% NaN ₃ , 40% Glycerol

Product overview

Description	Anti-MAGEB10 rabbit polyclonal antibody
Applications	ELISA, IHC
Immunogen	Fusion protein of human MAGEB10
Reactivity	Human
Content	0.3 mg/ml
Host species	Rabbit
Ig class	Immunogen-specific rabbit IgG
Purification	Antigen affinity purification

Target information

Symbol	MAGEB10
Full name	melanoma antigen family B, 10
Synonyms	
Swissprot	Q96LZ2

Target Background

This gene encodes a member of the B subfamily of the melanoma associated antigen protein family. The encoded protein is specifically expressed in testis and tumor cells.

订购热线: 4008-898-798

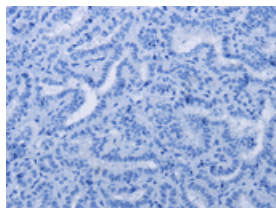
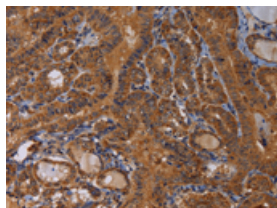
Applications

Immunohistochemistry

Predicted cell location: Cytoplasm

Positive control: Human thyroid cancer

Recommended dilution: 100-300

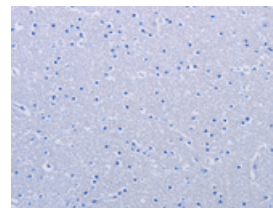
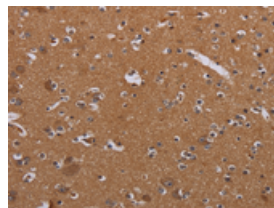


The image on the left is immunohistochemistry of paraffin-embedded Human thyroid cancer tissue using ml122648(MAGEB10 Antibody) at dilution 1/60, on the right is treated with fusion protein. (Original magnification: $\times 200$)

Predicted cell location: Cytoplasm

Positive control: Human brain

Recommended dilution: 100-300



The image on the left is immunohistochemistry of paraffin-embedded Human brain tissue using ml122648(MAGEB10 Antibody) at dilution 1/60, on the right is treated with fusion protein. (Original magnification: $\times 200$)

ELISA

Recommended dilution: 2000-10000

联系电话: 4008-898-798, 021-61725725

联系QQ: 2881505695, 2881505696

邮箱: mlbio_cn@yeah.net

网址: www.mlbio.cn