

## Anti-TRPM8 antibody

<b>Cat. No.</b>	ml122681
<b>Package</b>	25 µl/100 µl/200 µl
<b>Storage</b>	-20°C, pH7.4 PBS, 0.05% NaN <sub>3</sub> , 40% Glycerol

### Product overview

<b>Description</b>	Anti-TRPM8 rabbit polyclonal antibody
<b>Applications</b>	ELISA, IHC
<b>Immunogen</b>	Fusion protein of human TRPM8
<b>Reactivity</b>	Human, Mouse, Rat
<b>Content</b>	0.2 mg/ml
<b>Host species</b>	Rabbit
<b>Ig class</b>	Immunogen-specific rabbit IgG
<b>Purification</b>	Antigen affinity purification

### Target information

<b>Symbol</b>	TRPM8
<b>Full name</b>	transient receptor potential cation channel, subfamily M, member 8
<b>Synonyms</b>	TRPP8; LTRPC6
<b>Swissprot</b>	Q7Z2W7

### Target Background

Transient receptor potential ion channels (TRPC) are a superfamily of six transmembrane segment-spanning gated cation channels. TRP subtypes mediate store-operated Ca<sup>2+</sup> entry, a process involving Ca<sup>2+</sup> influx and replenishment of Ca<sup>2+</sup> stores formerly emptied through the action of inositol 1,4,5-trisphosphate production and other Ca<sup>2+</sup> mobilizing agents.



订购热线: 4008-898-798

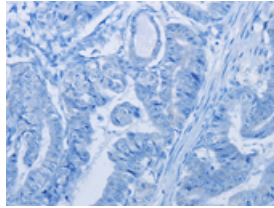
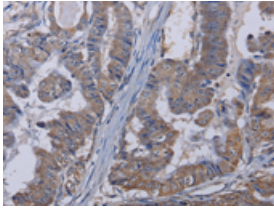
#### Applications

##### Immunohistochemistry

Predicted cell location: Cytoplasm

Positive control: Human esophagus cancer

Recommended dilution: 25-100



The image on the left is immunohistochemistry of paraffin-embedded Human esophagus cancer tissue using ml122681(TRPM8 Antibody) at dilution 1/30, on the right is treated with fusion protein. (Original magnification:  $\times 200$ )

##### ELISA

Recommended dilution: 1000-2000

联系电话: 4008-898-798, 021-61725725

联系QQ: 2881505695, 2881505696

邮箱: [mlbio\\_cn@yeah.net](mailto:mlbio_cn@yeah.net)

网址: [www.mlbio.cn](http://www.mlbio.cn)