

Anti-GHITM antibody

Cat. No.	ml122688
Package	25 µl/100 µl/200 µl
Storage	-20°C, pH7.4 PBS, 0.05% NaN ₃ , 40% Glycerol

Product overview

Description	Anti-GHITM rabbit polyclonal antibody
Applications	ELISA, IHC
Immunogen	Fusion protein of human GHITM
Reactivity	Human, Mouse, Rat
Content	0.4 mg/ml
Host species	Rabbit
Ig class	Immunogen-specific rabbit IgG
Purification	Antigen affinity purification

Target information

Symbol	GHITM
Full name	growth hormone inducible transmembrane protein
Synonyms	DERP2; MICS1; My021; PTD010; TMBIM5; HSPC282
Swissprot	Q9H3K2

Target Background

Growth hormone-inducible transmembrane protein is a protein that in humans is encoded by the GHITM gene. Required for the mitochondrial tubular network and cristae organization. Involved in apoptotic release of cytochrome c.

订购热线: 4008-898-798

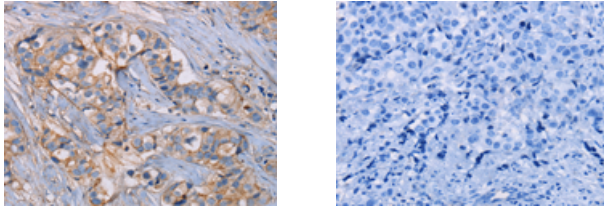
Applications

Immunohistochemistry

Predicted cell location: Cytoplasm

Positive control: Human breast cancer

Recommended dilution: 25-100



The image on the left is immunohistochemistry of paraffin-embedded Human breast cancer tissue using ml122688(GHITM Antibody) at dilution 1/30, on the right is treated with fusion protein. (Original magnification: $\times 200$)

ELISA

Recommended dilution: 1000-2000

联系电话: 4008-898-798, 021-61725725

联系QQ: 2881505695, 2881505696

邮箱: mlbio_cn@yeah.net

网址: www.mlbio.cn