

Anti-CMC4 antibody

Cat. No.	ml122710
Package	25 µl/100 µl/200 µl
Storage	-20°C, pH7.4 PBS, 0.05% NaN ₃ , 40% Glycerol

Product overview

Description	Anti-CMC4 rabbit polyclonal antibody
Applications	ELISA, IHC
Immunogen	Fusion protein of human CMC4
Reactivity	Human, Mouse
Content	0.3 mg/ml
Host species	Rabbit
Ig class	Immunogen-specific rabbit IgG
Purification	Antigen affinity purification

Target information

Symbol	CMC4
Full name	C-x(9)-C motif containing 4
Synonyms	p8; C6.1B; MTCP1; MTCP1B; MTCP1NB; p8MTCP1
Swissprot	P56277

Target Background

This gene was identified by involvement in some t(X;14) translocations associated with mature T-cell proliferations. This region has a complex gene structure, with a common promoter and 5' exon spliced to two different sets of 3' exons that encode two different proteins. This gene represents the downstream 8 kDa protein that localizes to mitochondria.

订购热线: 4008-898-798

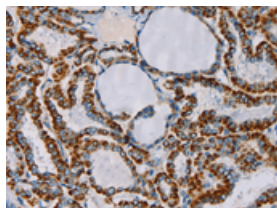
Applications

Immunohistochemistry

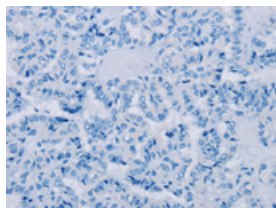
Predicted cell location: Cytoplasm

Positive control: Human thyroid cancer

Recommended dilution: 100-300



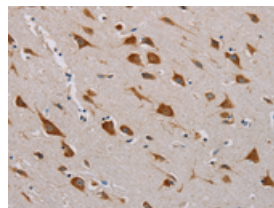
The image on the left is immunohistochemistry of paraffin-embedded Human thyroid cancer tissue using ml122710(CMC4 Antibody) at dilution 1/55, on the right is treated with fusion protein. (Original magnification: $\times 200$)



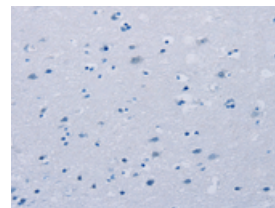
Predicted cell location: Cytoplasm

Positive control: Human brain

Recommended dilution: 100-300



The image on the left is immunohistochemistry of paraffin-embedded Human brain tissue using ml122710(CMC4 Antibody) at dilution 1/55, on the right is treated with fusion protein. (Original magnification: $\times 200$)



ELISA

Recommended dilution: 2000-10000

联系电话: 4008-898-798, 021-61725725

联系QQ: 2881505695, 2881505696

邮箱: mlbio_cn@yeah.net

网址: www.mlbio.cn