

## Anti-NANOS2 antibody

<b>Cat. No.</b>	ml122728
<b>Package</b>	25 µl/100 µl/200 µl
<b>Storage</b>	-20°C, pH7.4 PBS, 0.05% NaN <sub>3</sub> , 40% Glycerol

### Product overview

<b>Description</b>	Anti-NANOS2 rabbit polyclonal antibody
<b>Applications</b>	ELISA, IHC
<b>Immunogen</b>	Fusion protein of human NANOS2
<b>Reactivity</b>	Human
<b>Content</b>	0.3 mg/ml
<b>Host species</b>	Rabbit
<b>Ig class</b>	Immunogen-specific rabbit IgG
<b>Purification</b>	Antigen affinity purification

### Target information

<b>Symbol</b>	NANOS2
<b>Full name</b>	nanos homolog 2 (Drosophila)
<b>Synonyms</b>	NOS2
<b>Swissprot</b>	P60321

### Target Background

Nanos2, also known as NOS2, is a 138 amino acid protein that contains one nanos-type zinc finger. The nanos-type zinc finger is comprised of two C2HC motifs, each of which are capable of binding one molecule of zinc and each of which work in tandem to play essential roles in translational regulation events. Expressed specifically in male germ cells, Nanos2 is essential for spermatogonia formation and is required to support the self-renewal, proliferation and overall development of proximal germ cells. Additionally, Nanos2 is thought to regulate the translation of target mRNAs, possibly by associating with the 3'-UTR of select transcripts.

订购热线: 4008-898-798

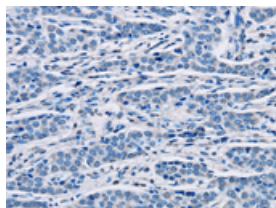
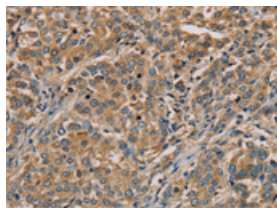
## Applications

### Immunohistochemistry

Predicted cell location: Cytoplasm

Positive control: Human liver cancer

Recommended dilution: 50-200

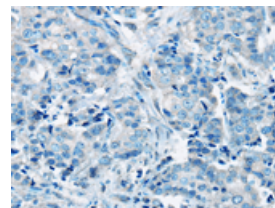
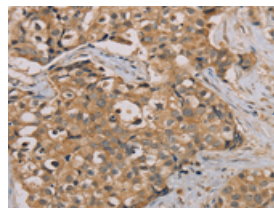


The image on the left is immunohistochemistry of paraffin-embedded Human liver cancer tissue using ml122728(NANOS2 Antibody) at dilution 1/30, on the right is treated with fusion protein. (Original magnification:  $\times 200$ )

Predicted cell location: Cytoplasm

Positive control: Human breast cancer

Recommended dilution: 50-200



The image on the left is immunohistochemistry of paraffin-embedded Human breast cancer tissue using ml122728(NANOS2 Antibody) at dilution 1/30, on the right is treated with fusion protein. (Original magnification:  $\times 200$ )

### ELISA

Recommended dilution: 2000-5000

联系电话: 4008-898-798, 021-61725725

联系QQ: 2881505695, 2881505696

邮箱: [mlbio\\_cn@yeah.net](mailto:mlbio_cn@yeah.net)

网址: [www.mlbio.cn](http://www.mlbio.cn)