

Anti-HTR1A antibody

Cat. No.	ml260012
Package	25 µl/100 µl/200 µl
Storage	-20°C, pH7.4 PBS, 0.05% NaN ₃ , 40% Glycerol

Product overview

Description	Anti-HTR1A rabbit polyclonal antibody
Applications	ELISA, WB, IHC
Immunogen	Synthetic peptide of human HTR1A
Reactivity	Human, Mouse, Rat
Content	0.8 mg/ml
Host species	Rabbit
Ig class	Immunogen-specific rabbit IgG
Purification	Antigen affinity purification

Target information

Symbol	HTR1A
Full name	5-hydroxytryptamine (serotonin) receptor 1A, G protein-coupled

Synonyms G-21; 5HT1a; PFMCD; 5-HT1A; 5-HT-1A; ADRBRL1; ADRB2RL1

Swissprot P08908

Target Background

This gene encodes a G protein-coupled receptor for 5-hydroxytryptamine (serotonin), and belongs to the 5-hydroxytryptamine receptor subfamily. Serotonin has been implicated in a number of physiologic processes and pathologic conditions. Inactivation of this gene in mice results in behavior consistent with an increased anxiety and stress response. Mutation in the promoter of this gene has been associated with menstrual cycle-dependent periodic fevers

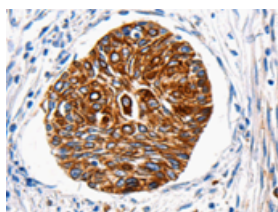
Applications

Immunohistochemistry

Predicted cell location: Cytoplasm, Cell membrane

Positive control: Human cervical cancer

Recommended dilution: 100-300



The image is immunohistochemistry of paraffin-embedded Human cervical cancer tissue using ml260012(HTR1A Antibody) at dilution 1/100. (Original magnification: ×200)

Western blotting

Predicted band size: 46 kDa

Positive control: HT-29 cells and Mouse brain tissue

Recommended dilution: 1000-5000

Gel: 8%SDS-PAGE

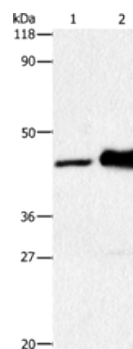
Lysate: 30 μ g

Lane 1-2: HT29 cells, Mouse brain tissue

Primary antibody: ml260012(HTR1A Antibody) at dilution 1/1500

Secondary antibody: Goat anti rabbit IgG at 1/8000 dilution

Exposure time: 2 minutes



ELISA

Recommended dilution: 2000-10000

联系电话: 4008-898-798, 021-61725725

联系QQ: 2881505695, 2881505696

邮箱: mlbio_cn@yeah.net

网址: www.mlbio.cn