

Anti-SERPINA3 antibody

Cat. No.	ml260014
Package	25 µl/100 µl/200 µl
Storage	-20°C, pH7.4 PBS, 0.05% NaN ₃ , 40% Glycerol

Product overview

Description	Anti-SERPINA3 rabbit polyclonal antibody
Applications	ELISA, WB
Immunogen	Synthetic peptide of human SERPINA3
Reactivity	Human
Content	0.4 mg/ml
Host species	Rabbit
Ig class	Immunogen-specific rabbit IgG
Purification	Antigen affinity purification

Target information

Symbol	SERPINA3
Full name	serpin peptidase inhibitor, clade A (alpha-1 antiproteinase, antitrypsin), member 3
Synonyms	ACT; AACT; GIG24; GIG25
Swissprot	P01011

Target Background

The protein encoded by this gene is a plasma protease inhibitor and member of the serine protease inhibitor class. Polymorphisms in this protein appear to be tissue specific and influence protease targeting. Variations in this protein's sequence have been implicated in Alzheimer's disease, and deficiency of this protein has been associated with liver disease. Mutations have been identified in patients with Parkinson disease and chronic obstructive pulmonary disease.

订购热线: 4008-898-798

Applications

Western blotting

Predicted band size: 48 kDa

Positive control: Human colon cancer tissue

Recommended dilution: 200-1000

Gel: 8%SDS-PAGE

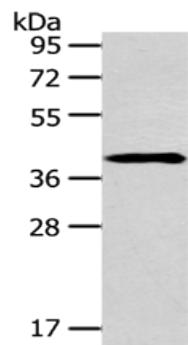
Lysate: 40 µg

Lane: Human colon cancer tissue

Primary antibody: ml260014(SERPINA3 Antibody) at
dilution 1/200

Secondary antibody: Goat anti rabbit IgG at 1/8000 dilution

Exposure time: 2 minutes



ELISA

Recommended dilution: 1000-2000

联系电话: 4008-898-798, 021-61725725

联系QQ: 2881505695, 2881505696

邮箱: mlbio_cn@yeah.net

网址: www.mlbio.cn