

Anti-ADIPOQ antibody

Cat. No.	ml260025
Package	25 µl/100 µl/200 µl
Storage	-20°C, pH7.4 PBS, 0.05% NaN ₃ , 40% Glycerol

Product overview

Description	Anti-ADIPOQ rabbit polyclonal antibody
Applications	ELISA, WB
Immunogen	Synthetic peptide of human ADIPOQ
Reactivity	Human, Mouse
Content	0.2 mg/ml
Host species	Rabbit
Ig class	Immunogen-specific rabbit IgG
Purification	Antigen affinity purification

Target information

Symbol	ADIPOQ
Full name	Adiponectin, C1Q and collagen domain containing
Synonyms	ACDC, ADPN, APM1, APM-1, GBP28, ACRP30, ADIPQTL1
Swissprot	Q15848

Target Background

This gene is expressed in adipose tissue exclusively. It encodes a protein with similarity to collagens X and VIII and complement factor C1q. The encoded protein circulates in the plasma and is involved with metabolic and hormonal processes. Mutations in this gene are associated with adiponectin deficiency. Multiple alternatively spliced variants, encoding the same protein, have been identified.

订购热线: 4008-898-798

Applications

Western blotting

Predicted band size: 26 kDa

Positive control: Human liver cancer tissue

Recommended dilution: 200-1000

Gel: 10% SDS-PAGE

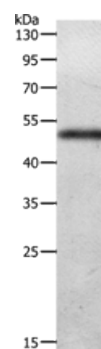
Lysate: 40 µg

Lane: Human liver cancer tissue

Primary antibody: ml260025 (ADIPOQ Antibody) at dilution 1/300

Secondary antibody: Goat anti rabbit IgG at 1/8000 dilution

Exposure time: 2 minutes



ELISA

Recommended dilution: 1000-2000

联系电话: 4008-898-798, 021-61725725

联系QQ: 2881505695, 2881505696

邮箱: mlbio_cn@yeah.net

网址: www.mlbio.cn