

Anti-RAB22A antibody

Cat. No.	ml260036
Package	25 µl/100 µl/200 µl
Storage	-20°C, pH7.4 PBS, 0.05% NaN ₃ , 40% Glycerol

Product overview

Description	Anti-RAB22A rabbit polyclonal antibody
Applications	ELISA, WB, IHC
Immunogen	Synthetic peptide of human RAB22A
Reactivity	Human, Mouse
Content	0.1 mg/ml
Host species	Rabbit
Ig class	Immunogen-specific rabbit IgG
Purification	Antigen affinity purification

Target information

Symbol	RAB22A
Full name	Ras-related protein Rab-22A

Synonyms

Swissprot Q9UL26

Target Background

The protein encoded by this gene is a member of the RAB family of small GTPases. The GTP-bound form of the encoded protein has been shown to interact with early-endosomal antigen 1, and may be involved in the trafficking of and interaction between endosomal compartments.

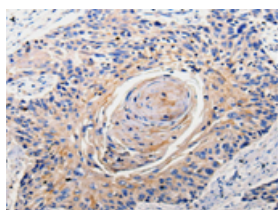
Applications

Immunohistochemistry

Predicted cell location: Cell membrane, Cytoplasm

Positive control: Human esophagus cancer

Recommended dilution: 50-200

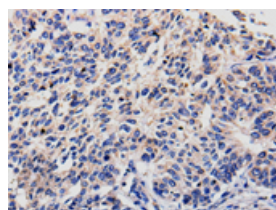


The image is immunohistochemistry of paraffin-embedded Human esophagus cancer tissue using ml260036(RAB22A Antibody) at dilution 1/100. (Original magnification: ×200)

Predicted cell location: Cell membrane, Cytoplasm

Positive control: Human lung cancer

Recommended dilution: 50-200



The image is immunohistochemistry of paraffin-embedded Human lung cancer tissue using ml260036(RAB22A Antibody) at dilution 1/100. (Original magnification: ×200)

Western blotting

Predicted band size: 22 kDa

Positive control: Mouse heart tissue

Recommended dilution: 200-1000

Gel: 12%SDS-PAGE

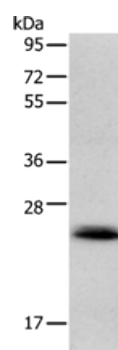
Lysate: 40 µg

Lane: Mouse heart tissue

Primary antibody: ml260036(RAB22A Antibody) at dilution 1/300

Secondary antibody: Goat anti rabbit IgG at 1/8000 dilution

Exposure time: 10 seconds



ELISA

Recommended dilution: 1000-5000

联系电话: 4008-898-798, 021-61725725

联系QQ: 2881505695, 2881505696

邮箱: mlbio_cn@yeah.net

网址: www.mlbio.cn