

## Anti-GPT antibody

|                 |   |
|-----------------|---|
| <b>Cat. No.</b> | ml260044  |
| <b>Package</b>  | 25 µl/100 µl/200 µl                                     |
| <b>Storage</b>  | -20°C, pH7.4 PBS, 0.05% NaN <sub>3</sub> , 40% Glycerol |

### Product overview

|                     |                                     |
|---------------------|-------------------------------------|
| <b>Description</b>  | Anti-GPT rabbit polyclonal antibody |
| <b>Applications</b> | ELISA, WB, IHC                      |
| <b>Immunogen</b>    | Synthetic peptide of human GPT      |
| <b>Reactivity</b>   | Human                               |
| <b>Content</b>      | 0.3 mg/ml                           |
| <b>Host species</b> | Rabbit                              |
| <b>Ig class</b>     | Immunogen-specific rabbit IgG       |
| <b>Purification</b> | Antigen affinity purification       |

### Target information

|                  |   |
|------------------|---|
| <b>Symbol</b>    | GPT   |
| <b>Full name</b> | glutamic-pyruvate transaminase (alanine aminotransferase) |

**Synonyms** AAT1; ALT1; GPT1

**Swissprot** P24298

#### **Target Background**

This gene encodes cytosolic alanine aminotransaminase 1 (ALT1); also known as glutamate-pyruvate transaminase 1. This enzyme catalyzes the reversible transamination between alanine and 2-oxoglutarate to generate pyruvate and glutamate and, therefore, plays a key role in the intermediary metabolism of glucose and amino acids. Serum activity levels of this enzyme are routinely used as a biomarker of liver injury caused by drug toxicity, infection, alcohol, and steatosis. A related gene on chromosome 16 encodes a putative mitochondrial alanine aminotransaminase.

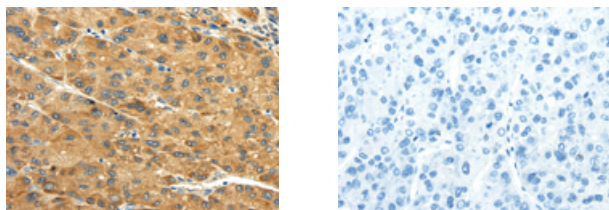
## Applications

### Immunohistochemistry

Predicted cell location: Cytoplasm

Positive control: Human liver cancer

Recommended dilution: 25-100



The image on the left is immunohistochemistry of paraffin-embedded Human liver cancer tissue using ml260044(GPT Antibody) at dilution 1/30, on the right is treated with synthetic peptide. (Original magnification:  $\times 200$ )

### Western blotting

Predicted band size: 55 kDa

Positive control: A431 cells

Recommended dilution: 200-1000

Gel: 8%SDS-PAGE

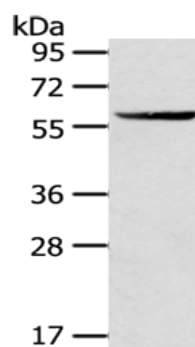
Lysate: 40 µg

Lane: A431 cells

Primary antibody: ml260044(GPT Antibody) at dilution 1/200

Secondary antibody: Goat anti rabbit IgG at 1/8000 dilution

Exposure time: 3 minutes



## ELISA

Recommended dilution: 1000-2000

联系电话: 4008-898-798, 021-61725725

联系QQ: 2881505695, 2881505696

邮箱: [mlbio\\_cn@yeah.net](mailto:mlbio_cn@yeah.net)

网址: [www.mlbio.cn](http://www.mlbio.cn)