

Anti-RAB3c antibody

Cat. No.	ml260065
Package	25 µl/100 µl/200 µl
Storage	-20°C, pH7.4 PBS, 0.05% NaN ₃ , 40% Glycerol

Product overview

Description	Anti-RAB3c rabbit polyclonal antibody
Applications	ELISA, WB, IHC
Immunogen	Synthetic peptide of human RAB3c
Reactivity	Human, Mouse, Rat
Content	0.3 mg/ml
Host species	Rabbit
Ig class	Immunogen-specific rabbit IgG
Purification	Antigen affinity purification

Target information

Symbol	RAB3c
Full name	Ras-related protein Rab-3C

Synonyms

Swissprot Q96E17

Target Background

Ras-related protein Rab-3C is a protein that in humans is encoded by the RAB3C gene. RAB proteins, such as RAB3C, are small GTPases implicated in the regulation of vesicular trafficking between membrane compartments. It involved in rotein transport and vesicular traffic probably.

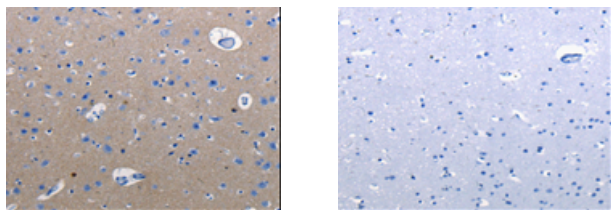
Applications

Immunohistochemistry

Predicted cell location: Cell membrane, Cytoplasm

Positive control: Human cervical cancer

Recommended dilution: 25-100



The image on the left is immunohistochemistry of paraffin-embedded Human cervical cancer tissue using ml260065(RAB3c Antibody) at dilution 1/25, on the right is treated with synthetic peptide. (Original magnification: $\times 200$)

Western blotting

Predicted band size: 26 kDa

Positive control: Human fetal brain tissue and 293T cells

Recommended dilution: 500-2000

Gel: 10%SDS-PAGE

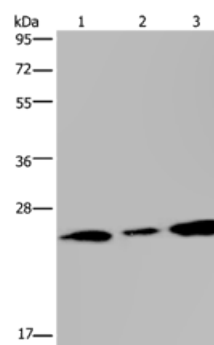
Lysate: 40 µg

Lane 1-2: Human fetal brain tissue, 293T cells

Primary antibody: ml260065(RAB3c Antibody) at dilution 1/400

Secondary antibody: Goat anti rabbit IgG at 1/8000 dilution

Exposure time: 1 minute



ELISA

Recommended dilution: 2000-10000

联系电话: 4008-898-798, 021-61725725

联系QQ: 2881505695, 2881505696

邮箱: mlbio_cn@yeah.net

网址: www.mlbio.cn