

Anti-RALB antibody

Cat. No.	ml260078
Package	25 µl/100 µl/200 µl
Storage	-20°C, pH7.4 PBS, 0.05% NaN ₃ , 40% Glycerol

Product overview

Description	Anti-RALB rabbit polyclonal antibody
Applications	ELISA, WB, IHC
Immunogen	Synthetic peptide of human RALB
Reactivity	Human, Mouse, Rat
Content	0.3 mg/ml
Host species	Rabbit
Ig class	Immunogen-specific rabbit IgG
Purification	Antigen affinity purification

Target information

Symbol	RALB
Full name	Ras-related protein Ral-B

Synonyms

Swissprot P11234

Target Background

This gene encodes a GTP-binding protein that belongs to the small GTPase superfamily and Ras family of proteins. GTP-binding proteins mediate the transmembrane signaling initiated by the occupancy of certain cell surface receptors.

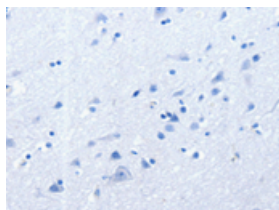
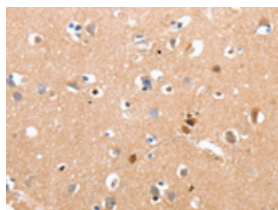
Applications

Immunohistochemistry

Predicted cell location: Cytoplasm

Positive control: Human brain

Recommended dilution: 10-50

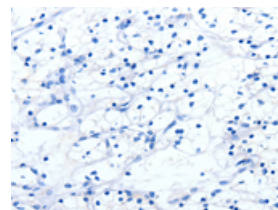
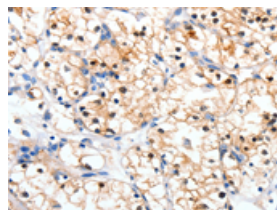


The image on the left is immunohistochemistry of paraffin-embedded Human brain tissue using ml260078(RALB Antibody) at dilution 1/10, on the right is treated with synthetic peptide. (Original magnification: ×200)

Predicted cell location: Cytoplasm

Positive control: Human renal cancer

Recommended dilution: 10-50



The image on the left is immunohistochemistry of paraffin-embedded Human renal cancer tissue using ml260078(RALB Antibody) at dilution 1/10, on the right is treated with synthetic peptide. (Original magnification: ×200)

Western blotting

Predicted band size: 24 kDa

Positive control: Mouse lung tissue

Recommended dilution: 500-2000

Gel: 10%SDS-PAGE

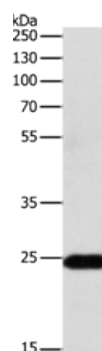
Lysate: 30 μ g

Lane: Mouse lung tissue

Primary antibody: ml260078(RALB Antibody) at dilution 1/300

Secondary antibody: Goat anti rabbit IgG at 1/8000 dilution

Exposure time: 30 seconds



ELISA

Recommended dilution: 500-5000

联系电话: 4008-898-798, 021-61725725

联系QQ: 2881505695, 2881505696

邮箱: mlbio_cn@yeah.net

网址: www.mlbio.cn