

Anti-AVEN antibody

Cat. No.	ml260111
Package	25 µl/100 µl/200 µl
Storage	-20°C, pH7.4 PBS, 0.05% NaN ₃ , 40% Glycerol

Product overview

Description	Anti-AVEN rabbit polyclonal antibody
Applications	ELISA, WB, IHC
Immunogen	Synthetic peptide of human AVEN
Reactivity	Human, Mouse
Content	0.4 mg/ml
Host species	Rabbit
Ig class	Immunogen-specific rabbit IgG
Purification	Antigen affinity purification

Target information

Symbol	AVEN
Full name	apoptosis, caspase activation inhibitor

Synonyms PDCD12

Swissprot Q9NQS1

Target Background

AVEN, a cell death regulator, is an important signal inducer in acute leukemia. AVEN is a highly conserved peripheral membrane protein that protects the cell against the proteolytic activation of caspases as well as Apaf-1 mediated apoptosis by interfering with Apaf-1's ability to self-associate. Bcl-2 and Bad also interact with AVEN to prevent apoptosis. AVEN is highly expressed in ovary, heart, thymus, spleen, testis and colon, but can also be detected in other tissues. Erythropoietin and methylprednisolone may play important roles in the expression of AVEN in cardiac tissue, especially after a traumatic brain injury. In young patients suffering from acute lymphoblastic leukemia (ALL), AVEN expression may be a useful tool in prognosis prediction.

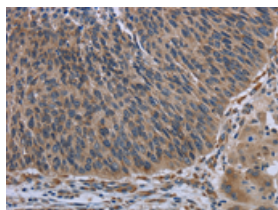
Applications

Immunohistochemistry

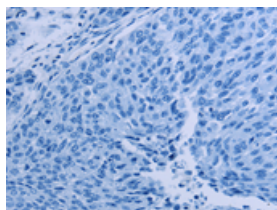
Predicted cell location: Cytoplasm

Positive control: Human lung cancer

Recommended dilution: 25-100



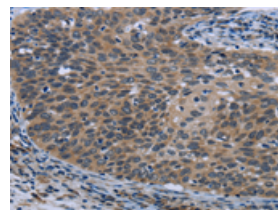
The image on the left is immunohistochemistry of paraffin-embedded Human lung cancer tissue using ml260111(AVEN Antibody) at dilution 1/30, on the right is treated with synthetic peptide. (Original magnification: $\times 200$)



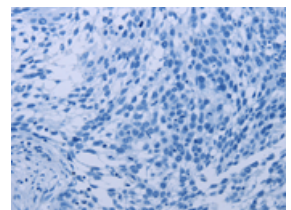
Predicted cell location: Cytoplasm

Positive control: Human cervical cancer

Recommended dilution: 25-100



The image on the left is immunohistochemistry of paraffin-embedded Human cervical cancer tissue using ml260111(AVEN Antibody) at dilution 1/30, on the right is treated with synthetic peptide. (Original magnification: $\times 200$)



Western blotting

Predicted band size: 39 kDa

Positive control: Raji and Hela cells

Recommended dilution: 500-2000

Gel: 8%SDS-PAGE

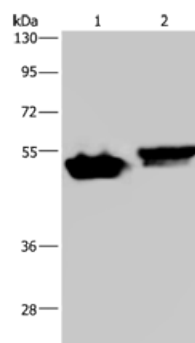
Lysate: 40 µg

Lane 1-2: Raji cells, Hela cells

Primary antibody: ml260111(AVEN Antibody) at dilution 1/200

Secondary antibody: Goat anti rabbit IgG at 1/8000 dilution

Exposure time: 2 minutes



ELISA

Recommended dilution: 2000-5000

联系电话: 4008-898-798, 021-61725725

联系QQ: 2881505695, 2881505696

邮箱: mlbio_cn@yeah.net

网址: www.mlbio.cn