

Anti-CEBPD antibody

Cat. No.	ml260164
Package	25 µl/100 µl/200 µl
Storage	-20°C, pH7.4 PBS, 0.05% NaN ₃ , 40% Glycerol

Product overview

Description	Anti-CEBPD rabbit polyclonal antibody
Applications	ELISA, WB
Immunogen	Synthetic peptide of human CEBPD
Reactivity	Human, Mouse, Rat
Content	0.2 mg/ml
Host species	Rabbit
Ig class	Immunogen-specific rabbit IgG
Purification	Antigen affinity purification

Target information

Symbol	CEBPD
Full name	CCAAT/enhancer-binding protein delta
Synonyms	CELF, CRP3, C/EBP-delta, NF-IL6-beta
Swissprot	P49716

Target Background

The protein encoded by this intronless gene is a bZIP transcription factor which can bind as a homodimer to certain DNA regulatory regions. It can also form heterodimers with the related protein CEBP-alpha. The encoded protein is important in the regulation of genes involved in immune and inflammatory responses, and may be involved in the regulation of genes associated with activation and/or differentiation of macrophages. The cytogenetic location of this locus has been reported as both 8p11 and 8q11.

订购热线: 4008-898-798

Applications

Western blotting

Predicted band size: 29 kDa

Positive control: Mouse lung tissue

Recommended dilution: 200-1000

Gel: 10% SDS-PAGE

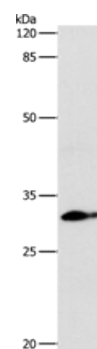
Lysate: 24 µg

Lane: Mouse lung tissue

Primary antibody: ml260164 (CEBPD Antibody) at dilution 1/250

Secondary antibody: Goat anti rabbit IgG at 1/8000 dilution

Exposure time: 30 seconds



ELISA

Recommended dilution: 500-5000

联系电话: 4008-898-798, 021-61725725

联系QQ: 2881505695, 2881505696

邮箱: mlbio_cn@yeah.net

网址: www.mlbio.cn