

Anti-CHEK1 antibody

Cat. No.	ml260169
Package	25 µl/100 µl/200 µl
Storage	-20°C, pH7.4 PBS, 0.05% NaN ₃ , 40% Glycerol

Product overview

Description	Anti-CHEK1 rabbit polyclonal antibody
Applications	ELISA, WB
Immunogen	Synthetic peptide of human CHEK1
Reactivity	Human, Mouse, Rat
Content	0.9 mg/ml
Host species	Rabbit
Ig class	Immunogen-specific rabbit IgG
Purification	Antigen affinity purification

Target information

Symbol	CHEK1
Full name	checkpoint kinase 1
Synonyms	CHK1
Swissprot	O14757

Target Background

The protein encoded by this gene belongs to the Ser/Thr protein kinase family. It is required for checkpoint mediated cell cycle arrest in response to DNA damage or the presence of unreplicated DNA. This protein acts to integrate signals from ATM and ATR, two cell cycle proteins involved in DNA damage responses, that also associate with chromatin in meiotic prophase I. Phosphorylation of CDC25A protein phosphatase by this protein is required for cells to delay cell cycle progression in response to double-strand DNA breaks. Several alternatively spliced transcript variants have been found for this gene.

订购热线: 4008-898-798

Applications

Western blotting

Predicted band size: 54 kDa

Positive control: A431 cells

Recommended dilution: 200-1000

Gel: 8%SDS-PAGE

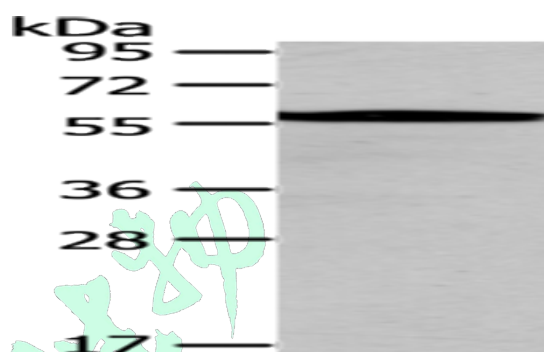
Lysate: 40 µg

Lane: A431 cells

Primary antibody: ml260169(CHEK1 Antibody) at dilution 1/200

Secondary antibody: Goat anti rabbit IgG at 1/8000 dilution

Exposure time: 10 minutes



ELISA

Recommended dilution: 1000-2000

联系电话: 4008-898-798, 021-61725725

联系QQ: 2881505695, 2881505696

邮箱: mlbio_cn@yeah.net

网址: www.mlbio.cn