

Anti-CUL2 antibody

Cat. No.	ml260214
Package	25 µl/100 µl/200 µl
Storage	-20°C, pH7.4 PBS, 0.05% NaN ₃ , 40% Glycerol

Product overview

Description	Anti-CUL2 rabbit polyclonal antibody
Applications	ELISA, WB
Immunogen	Synthetic peptide of human CUL2
Reactivity	Human, Mouse
Content	0.6 mg/ml
Host species	Rabbit
Ig class	Immunogen-specific rabbit IgG
Purification	Antigen affinity purification

Target information

Symbol	CUL2
Full name	cullin 2
Synonyms	
Swissprot	Q13617

Target Background

Human CUL2 is an ortholog of nematode cul2. Michel and Xiong (1998) identified human CUL2 cDNAs and reported that the predicted protein is 745 amino acids long. Core component of multiple cullin-RING-based ECS (ElonginB/C-CUL2/5-SOCS-box protein) E3 ubiquitin-protein ligase complexes, which mediate the ubiquitination of target proteins. May serve as a rigid scaffold in the complex and may contribute to catalysis through positioning of the substrate and the ubiquitin-conjugating enzyme. The E3 ubiquitin-protein ligase activity of the complex is dependent on the neddylation of the cullin subunit and is inhibited by the association of the deneddylated cullin subunit with TIP120A/CAND1. By similarity. The functional specificity of the ECS complex depends on the substrate recognition component. ECS(VHL) mediates the ubiquitination of hypoxia-inducible factor (HIF).

订购热线: 4008-898-798

Applications

Western blotting

Predicted band size: 87 kDa

Positive control: PC3 cells

Recommended dilution: 500-2000

Gel: 6% SDS-PAGE

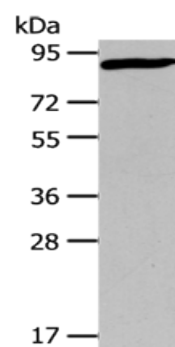
Lysate: 40 µg

Lane: PC3 cells

Primary antibody: ml260214(CUL2 Antibody) at dilution 1/440

Secondary antibody: Goat anti rabbit IgG at 1/8000 dilution

Exposure time: 3 minutes



ELISA

Recommended dilution: 2000-5000

联系电话: 4008-898-798, 021-61725725

联系QQ: 2881505695, 2881505696

邮箱: mlbio_cn@yeah.net

网址: www.mlbio.cn