

## Anti-CUL4A antibody

<b>Cat. No.</b>	ml260215
<b>Package</b>	25 µl/100 µl/200 µl
<b>Storage</b>	-20°C, pH7.4 PBS, 0.05% NaN <sub>3</sub> , 40% Glycerol

### Product overview

<b>Description</b>	Anti-CUL4A rabbit polyclonal antibody
<b>Applications</b>	ELISA, WB, IHC
<b>Immunogen</b>	Synthetic peptide of human CUL4A
<b>Reactivity</b>	Human, Mouse
<b>Content</b>	1.62 mg/ml
<b>Host species</b>	Rabbit
<b>Ig class</b>	Immunogen-specific rabbit IgG
<b>Purification</b>	Antigen affinity purification

### Target information

<b>Symbol</b>	CUL4A
<b>Full name</b>	cullin 4A

#### Synonyms

Swissprot Q13619

#### Target Background

CUL4A is the ubiquitin ligase component of a multimeric complex involved in the degradation of DNA damage-response proteins.

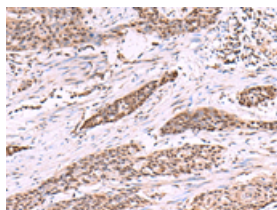
## Applications

### Immunohistochemistry

Predicted cell location: Nucleus

Positive control: Human esophagus cancer

Recommended dilution: 50-300

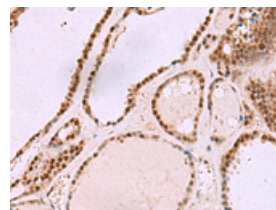


The image on the left is immunohistochemistry of paraffin-embedded Human esophagus cancer tissue using ml260215(CUL4A Antibody) at dilution 1/55, on the right is treated with synthetic peptide. (Original magnification:  $\times 200$ )

Predicted cell location: Nucleus

Positive control: Human thyroid cancer

Recommended dilution: 50-300



The image on the left is immunohistochemistry of paraffin-embedded Human thyroid cancer tissue using ml260215(CUL4A Antibody) at dilution 1/55, on the right is treated with synthetic peptide. (Original magnification:  $\times 200$ )

### Western blotting

Predicted band size: 88 kDa

Positive control: 231 and HepG2 cell lysates

Recommended dilution: 500-2000

Gel: 6%SDS-PAGE

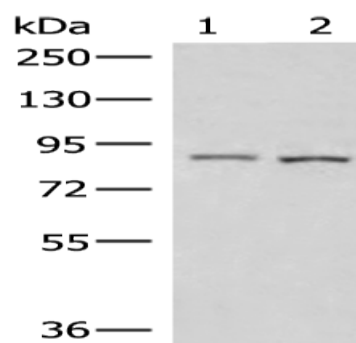
Lysate: 40 µg

Lane 1-2: 231 and HepG2 cell lysates

Primary antibody: ml260215(CUL4A Antibody) at dilution 1/600

Secondary antibody: Goat anti rabbit IgG at 1/8000 dilution

Exposure time: 3 seconds



#### ELISA

Recommended dilution: 5000-10000

联系电话: 4008-898-798, 021-61725725

联系QQ: 2881505695, 2881505696

邮箱: [mlbio\\_cn@yeah.net](mailto:mlbio_cn@yeah.net)

网址: [www.mlbio.cn](http://www.mlbio.cn)