

Anti-CX3CR1 antibody

Cat. No.	ml260232
Package	25 µl/100 µl/200 µl
Storage	-20°C, pH7.4 PBS, 0.05% NaN ₃ , 40% Glycerol

Product overview

Description	Anti-CX3CR1 rabbit polyclonal antibody
Applications	ELISA, WB
Immunogen	Synthetic peptide of human CX3CR1
Reactivity	Human
Content	0.393 mg/ml
Host species	Rabbit
Ig class	Immunogen-specific rabbit IgG
Purification	Antigen affinity purification

Target information

Symbol	CX3CR1
Full name	chemokine (C-X3-C motif) receptor 1
Synonyms	V28, CCRL1, GPR13, CMKDR1, GPRV28, CMKBRL1
Swissprot	P49238

Target Background

Fractalkine is a transmembrane protein and chemokine involved in the adhesion and migration of leukocytes. The protein encoded by this gene is a receptor for fractalkine. The encoded protein also is a coreceptor for HIV-1, and some variations in this gene lead to increased susceptibility to HIV-1 infection and rapid progression to AIDS. Four transcript variants encoding two different isoforms have been found for this gene.

订购热线: 4008-898-798

Applications

Western blotting

Predicted band size: 41 kDa

Positive control: Human fetal muscle tissue

Recommended dilution: 200-1000

Gel: 10%SDS-PAGE

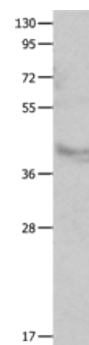
Lysate: 60 µg

Lane: Human fetal muscle tissue

Primary antibody: ml260232(CX3CR1 Antibody) at dilution 1/100

Secondary antibody: Goat anti rabbit IgG at 1/8000 dilution

Exposure time: 1 minute



ELISA

Recommended dilution: 1000-5000

联系电话: 4008-898-798, 021-61725725

联系QQ: 2881505695, 2881505696

邮箱: mlbio_cn@yeah.net

网址: www.mlbio.cn