

## Anti-CCND2 antibody

<b>Cat. No.</b>	ml260237
<b>Package</b>	25 µl/100 µl/200 µl
<b>Storage</b>	-20°C, pH7.4 PBS, 0.05% NaN <sub>3</sub> , 40% Glycerol

### Product overview

<b>Description</b>	Anti-CCND2 rabbit polyclonal antibody
<b>Applications</b>	ELISA, WB, IHC
<b>Immunogen</b>	Synthetic peptide of human CCND2
<b>Reactivity</b>	Human
<b>Content</b>	0.8 mg/ml
<b>Host species</b>	Rabbit
<b>Ig class</b>	Immunogen-specific rabbit IgG
<b>Purification</b>	Antigen affinity purification

### Target information

<b>Symbol</b>	CCND2
<b>Full name</b>	cyclin D2

**Synonyms** KIAK0002

**Swissprot** P30279

#### **Target Background**

The protein encoded by this gene belongs to the highly conserved cyclin family, whose members are characterized by a dramatic periodicity in protein abundance through the cell cycle. Cyclins function as regulators of CDK kinases. Different cyclins exhibit distinct expression and degradation patterns which contribute to the temporal coordination of each mitotic event. This cyclin forms a complex with and functions as a regulatory subunit of CDK4 or CDK6, whose activity is required for cell cycle G1/S transition. This protein has been shown to interact with and be involved in the phosphorylation of tumor suppressor protein Rb. Knockout studies of the homologous gene in mouse suggest the essential roles of this gene in ovarian granulosa and germ cell proliferation. High level expression of this gene was observed in ovarian and testicular tumors.

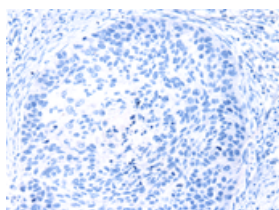
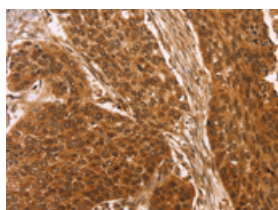
## Applications

### Immunohistochemistry

Predicted cell location: Cytoplasm and Nucleus

Positive control: Human esophagus cancer

Recommended dilution: 25-100

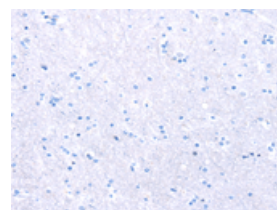
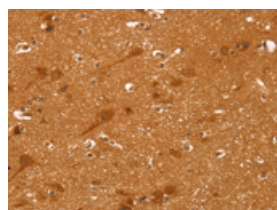


The image on the left is immunohistochemistry of paraffin-embedded Human esophagus cancer tissue using ml260237(CCND2 Antibody) at dilution 1/25, on the right is treated with synthetic peptide. (Original magnification:  $\times 200$ )

Predicted cell location: Cytoplasm and Nucleus

Positive control: Human brain

Recommended dilution: 25-100



The image on the left is immunohistochemistry of paraffin-embedded Human brain tissue using ml260237(CCND2 Antibody) at dilution 1/25, on the right is treated with synthetic peptide. (Original magnification:  $\times 200$ )

### Western blotting

Predicted band size: 33 kDa

Positive control: 231 cells

Recommended dilution: 200-1000

Gel: 10%SDS-PAGE

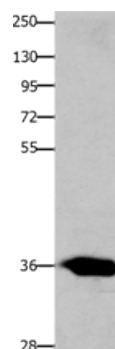
Lysate: 30  $\mu$ g

Lane: 231 cells

Primary antibody: ml260237(CCND2 Antibody) at dilution 1/200

Secondary antibody: Goat anti rabbit IgG at 1/8000 dilution

Exposure time: 5 minutes



#### ELISA

Recommended dilution: 1000-10000

联系电话: 4008-898-798, 021-61725725

联系QQ: 2881505695, 2881505696

邮箱: [mlbio\\_cn@yeah.net](mailto:mlbio_cn@yeah.net)

网址: [www.mlbio.cn](http://www.mlbio.cn)