

Anti-PVRL1 antibody

Cat. No.	ml260288
Package	25 µl/100 µl/200 µl
Storage	-20°C, pH7.4 PBS, 0.05% NaN ₃ , 40% Glycerol

Product overview

Description	Anti-PVRL1 rabbit polyclonal antibody
Applications	ELISA, WB
Immunogen	Synthetic peptide of human PVRL1
Reactivity	Human, Mouse, Rat
Content	0.3 mg/ml
Host species	Rabbit
Ig class	Immunogen-specific rabbit IgG
Purification	Antigen affinity purification

Target information

Symbol	PVRL1
Full name	Poliovirus receptor-related protein 1
Synonyms	ED4, PRR, HIgR, HVEC, OFC7, PRR1, PVRR, CD111, PVRR1, SK-12, CLPED1, nectin-1
Swissprot	Q15223

Target Background

This gene encodes an adhesion protein that plays a role in the organization of adherens junctions and tight junctions in epithelial and endothelial cells. The protein is a calcium(2+)-independent cell-cell adhesion molecule that belongs to the immunoglobulin superfamily and has 3 extracellular immunoglobulin-like loops, a single transmembrane domain (in some isoforms), and a cytoplasmic region. This protein acts as a receptor for glycoprotein D (gD) of herpes simplex viruses 1 and 2 (HSV-1, HSV-2), and pseudorabies virus (PRV) and mediates viral entry into epithelial and neuronal cells. Mutations in this gene cause cleft lip and palate/ectodermal dysplasia 1 syndrome (CLPED1) as well as non-syndromic cleft lip with or without cleft palate (CL/P). Alternative splicing results in multiple transcript variants encoding proteins with distinct C-termini.

订购热线: 4008-898-798

Applications

Western blotting

Predicted band size: 57 kDa

Positive control: Human cervical cancer, legs fibrous histiocytoma and fetal brain tissue

Recommended dilution: 200-1000

Gel: 10%SDS-PAGE

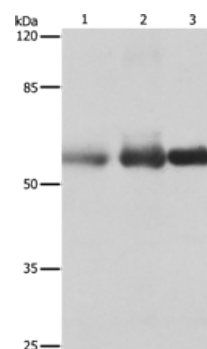
Lysate: 30 µg

Lane 1-3: Human cervical cancer tissue, Human legs fibrous histiocytoma, Human fetal brain tissue

Primary antibody: ml260288(PVRL1 Antibody) at dilution 1/400

Secondary antibody: Goat anti rabbit IgG at 1/8000 dilution

Exposure time: 1 minute



ELISA

Recommended dilution: 500-5000

联系电话: 4008-898-798, 021-61725725

联系QQ: 2881505695, 2881505696

邮箱: mlbio_cn@yeah.net

网址: www.mlbio.cn