

Anti-POMC (Beta endorphin) antibody

Cat. No.	ml260297
Package	25 µl/100 µl/200 µl
Storage	-20°C, pH7.4 PBS, 0.05% NaN ₃ , 40% Glycerol

Product overview

Description	Anti-POMC (Beta endorphin) rabbit polyclonal antibody
Applications	ELISA, WB
Immunogen	Synthetic peptide of human POMC (Beta endorphin)
Reactivity	Human, Mouse, Rat
Content	0.6 mg/ml
Host species	Rabbit
Ig class	Immunogen-specific rabbit IgG
Purification	Antigen affinity purification

Target information

Symbol	POMC (Beta endorphin)
Full name	proopiomelanocortin
Synonyms	LPH; MSH; NPP; POC; ACTH; CLIP
Swissprot	P01189

Target Background

This gene encodes a polypeptide hormone precursor that undergoes extensive, tissue-specific, post-translational processing via cleavage by subtilisin-like enzymes known as prohormone convertases. There are eight potential cleavage sites within the polypeptide precursor and, depending on tissue type and the available convertases, processing may yield as many as ten biologically active peptides involved in diverse cellular functions. The encoded protein is synthesized mainly in corticotroph cells of the anterior pituitary where four cleavage sites are used; adrenocorticotrophin, essential for normal steroidogenesis and the maintenance of normal adrenal weight, and lipotropin beta are the major end products. In other tissues, including the hypothalamus, placenta, and epithelium, all cleavage sites may be used, giving rise to peptides with roles in pain and energy homeostasis, melanocyte stimulation, and immune modulation.

订购热线: 4008-898-798

Applications

Western blotting

Predicted band size: 29 kDa

Positive control: A172 cells

Recommended dilution: 500-2000

Gel: 10% SDS-PAGE

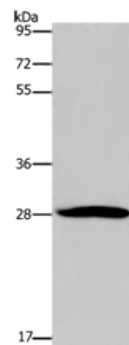
Lysate: 80 µg

Lane: A172 cells

Primary antibody: ml260297 (POMC (Beta endorphin) Antibody) at dilution 1/350

Secondary antibody: Goat anti rabbit IgG at 1/8000 dilution

Exposure time: 2 minutes



ELISA

Recommended dilution: 2000-5000

联系电话: 4008-898-798, 021-61725725

联系QQ: 2881505695, 2881505696

邮箱: mlbio_cn@yeah.net

网址: www.mlbio.cn