

Anti-FOXC2 antibody

Cat. No.	ml260348
Package	25 µl/100 µl/200 µl
Storage	-20°C, pH7.4 PBS, 0.05% NaN ₃ , 40% Glycerol

Product overview

Description	Anti-FOXC2 rabbit polyclonal antibody
Applications	ELISA, WB
Immunogen	Synthetic peptide of human FOXC2
Reactivity	Human, Mouse, Rat
Content	0.3 mg/ml
Host species	Rabbit
Ig class	Immunogen-specific rabbit IgG
Purification	Antigen affinity purification

Target information

Symbol	FOXC2
Full name	forkhead box C2 (MFH-1, mesenchyme forkhead 1)
Synonyms	LD; MFH1; MFH-1; FKHL14
Swissprot	Q99958

Target Background

This gene belongs to the forkhead family of transcription factors which is characterized by a distinct DNA-binding forkhead domain. The specific function of this gene has not yet been determined; however, it may play a role in the development of mesenchymal tissues.

订购热线: 4008-898-798

Applications

Western blotting

Predicted band size: 54 kDa

Positive control: Human breast infiltrative duct tissue

Recommended dilution: 500-2000

Gel: 8%SDS-PAGE

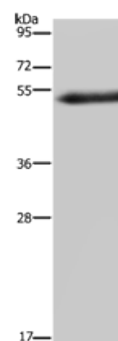
Lysate: 40 µg

Lane: Human breast infiltrative duct tissue

Primary antibody: ml260348(FOXC2 Antibody) at dilution 1/733

Secondary antibody: Goat anti rabbit IgG at 1/8000 dilution

Exposure time: 5 minutes



ELISA

Recommended dilution: 2000-5000

联系电话: 4008-898-798, 021-61725725

联系QQ: 2881505695, 2881505696

邮箱: mlbio_cn@yeah.net

网址: www.mlbio.cn