

Anti-FOXL1 antibody

Cat. No.	ml260359
Package	25 µl/100 µl/200 µl
Storage	-20°C, pH7.4 PBS, 0.05% NaN ₃ , 40% Glycerol

Product overview

Description	Anti-FOXL1 rabbit polyclonal antibody
Applications	ELISA, WB
Immunogen	Synthetic peptide of human FOXL1
Reactivity	Human, Mouse
Content	0.6 mg/ml
Host species	Rabbit
Ig class	Immunogen-specific rabbit IgG
Purification	Antigen affinity purification

Target information

Symbol	FOXL1
Full name	forkhead box L1
Synonyms	FKH6, FKHL11, FREAC7
Swissprot	Q12952

Target Background

This gene encodes a member of the forkhead/winged helix-box (FOX) family of transcription factors. FOX transcription factors are characterized by a distinct DNA-binding forkhead domain and play critical roles in the regulation of multiple processes including metabolism, cell proliferation and gene expression during ontogenesis. Transcription factor required for proper proliferation and differentiation in the gastrointestinal epithelium. Target gene of the hedgehog (Hh) signaling pathway via GLI2 AND GLI3 transcription factors.

订购热线: 4008-898-798

Applications

Western blotting

Predicted band size: 36 kDa

Positive control: 293T cells and mouse intestine tissue

Recommended dilution: 500-2000

Gel: 10% SDS-PAGE

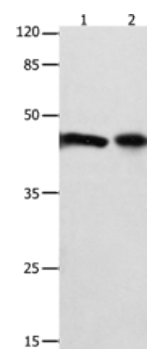
Lysate: 40 µg

Lane 1-2: 293T cells, mouse intestine tissue

Primary antibody: ml260359 (FOX L1 Antibody) at dilution 1/850

Secondary antibody: Goat anti rabbit IgG at 1/8000 dilution

Exposure time: 30 seconds



ELISA

Recommended dilution: 1000-5000

联系电话: 4008-898-798, 021-61725725

联系QQ: 2881505695, 2881505696

邮箱: mlbio_cn@yeah.net

网址: www.mlbio.cn