

Anti-FOXL2 antibody

Cat. No.	ml260360
Package	25 µl/100 µl/200 µl
Storage	-20°C, pH7.4 PBS, 0.05% NaN ₃ , 40% Glycerol

Product overview

Description	Anti-FOXL2 rabbit polyclonal antibody
Applications	ELISA, WB
Immunogen	Synthetic peptide of human FOXL2
Reactivity	Human, Mouse
Content	0.5 mg/ml
Host species	Rabbit
Ig class	Immunogen-specific rabbit IgG
Purification	Antigen affinity purification

Target information

Symbol	FOXL2
Full name	forkhead box L2
Synonyms	BPES, PFRK, POF3, BPES1, PINTO
Swissprot	P58012

Target Background

This gene encodes a forkhead transcription factor. The protein contains a fork-head DNA-binding domain and may play a role in ovarian development and function. Mutations in this gene are a cause of blepharophimosis syndrome and premature ovarian failure 3. Critical factor essential for ovary differentiation and maintenance, and repression of the genetic program for somatic testis determination. Prevents trans-differentiation of ovary to testis through transcriptional repression of the Sertoli cell-promoting gene SOX9. Activates SIRT1 transcription under cellular stress conditions. Activates transcription of OSR2.

订购热线: 4008-898-798

Applications

Western blotting

Predicted band size: 50 kDa

Positive control: Mouse brain and heart tissue

Recommended dilution: 500-2000

Gel: 10% SDS-PAGE

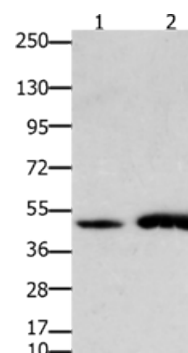
Lysate: 40 µg

Lane 1-2: Mouse brain tissue, Mouse heart tissue

Primary antibody: ml260360 (FOX L2 Antibody) at dilution 1/750

Secondary antibody: Goat anti rabbit IgG at 1/8000 dilution

Exposure time: 30 seconds



ELISA

Recommended dilution: 1000-5000

联系电话: 4008-898-798, 021-61725725

联系QQ: 2881505695, 2881505696

邮箱: mlbio_cn@yeah.net

网址: www.mlbio.cn