

Anti-FOXP3 antibody

Cat. No.	ml260367
Package	25 µl/100 µl/200 µl
Storage	-20°C, pH7.4 PBS, 0.05% NaN ₃ , 40% Glycerol

Product overview

Description	Anti-FOXP3 rabbit polyclonal antibody
Applications	ELISA, WB
Immunogen	Synthetic peptide of human FOXP3
Reactivity	Human, Mouse
Content	1.5 mg/ml
Host species	Rabbit
Ig class	Immunogen-specific rabbit IgG
Purification	Antigen affinity purification

Target information

Symbol	FOXP3
Full name	forkhead box P3
Synonyms	JM2, AIID, IPEX, PIDX, XPID, DIETER
Swissprot	Q9BZS1

Target Background

The protein encoded by this gene is a member of the forkhead/winged-helix family of transcriptional regulators. Defects in this gene are the cause of immunodeficiency polyendocrinopathy, enteropathy, X-linked syndrome (IPEX), also known as X-linked autoimmunity-immunodeficiency syndrome. Alternatively spliced transcript variants encoding different isoforms have been identified.

订购热线: 4008-898-798

Applications

Western blotting

Predicted band size: 50 kDa

Positive control: Mouse kidney tissue

Recommended dilution: 500-2000

Gel: 8%SDS-PAGE

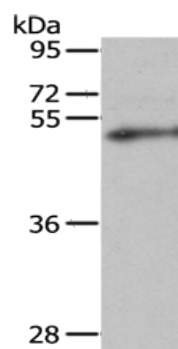
Lysate: 40 µg

Lane: Mouse kidney tissue

Primary antibody: ml260367(FOXP3 Antibody) at dilution 1/222

Secondary antibody: Goat anti rabbit IgG at 1/8000 dilution

Exposure time: 2 minutes



ELISA

Recommended dilution: 2000-5000

联系电话: 4008-898-798, 021-61725725

联系QQ: 2881505695, 2881505696

邮箱: mlbio_cn@yeah.net

网址: www.mlbio.cn