

Anti-CLDN1 antibody

Cat. No.	ml260403
Package	25 µl/100 µl/200 µl
Storage	-20°C, pH7.4 PBS, 0.05% NaN ₃ , 40% Glycerol

Product overview

Description	Anti-CLDN1 rabbit polyclonal antibody
Applications	ELISA, WB, IHC
Immunogen	Synthetic peptide of human CLDN1
Reactivity	Human, Mouse, Rat
Content	1 mg/ml
Host species	Rabbit
Ig class	Immunogen-specific rabbit IgG
Purification	Antigen affinity purification

Target information

Symbol	CLDN1
Full name	claudin 1

Synonyms CLD1, SEMP1, ILVASC

Swissprot O95832

Target Background

Tight junctions represent one mode of cell-to-cell adhesion in epithelial or endothelial cell sheets, forming continuous seals around cells and serving as a physical barrier to prevent solutes and water from passing freely through the paracellular space. These junctions are comprised of sets of continuous networking strands in the outwardly facing cytoplasmic leaflet, with complementary grooves in the inwardly facing extracytoplasmic leaflet. The protein encoded by this gene, a member of the claudin family, is an integral membrane protein and a component of tight junction strands. Loss of function mutations result in neonatal ichthyosis-sclerosing cholangitis syndrome.

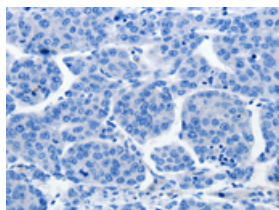
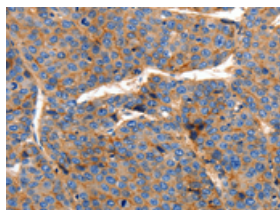
Applications

Immunohistochemistry

Predicted cell location: Cytoplasm

Positive control: Human liver cancer

Recommended dilution: 100-300

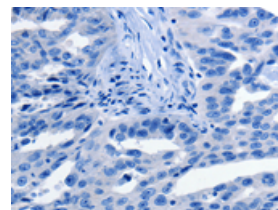
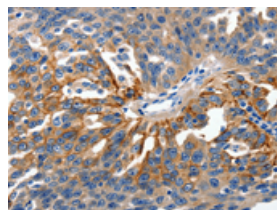


The image on the left is immunohistochemistry of paraffin-embedded Human liver cancer tissue using ml260403(CLDN1 Antibody) at dilution 1/150, on the right is treated with synthetic peptide. (Original magnification: $\times 200$)

Predicted cell location: Cytoplasm

Positive control: Human ovarian cancer

Recommended dilution: 100-300



The image on the left is immunohistochemistry of paraffin-embedded Human ovarian cancer tissue using ml260403(CLDN1 Antibody) at dilution 1/150, on the right is treated with synthetic peptide. (Original magnification: $\times 200$)

Western blotting

Predicted band size: 23 kDa

Positive control: Hela cells

Recommended dilution: 2000-5000

Gel: 10%SDS-PAGE

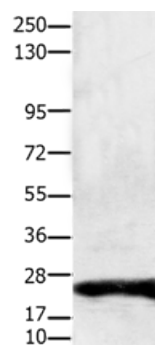
Lysate: 30 μ g

Lane: Hela cells

Primary antibody: ml260403(CLDN1 Antibody) at dilution 1/1900

Secondary antibody: Goat anti rabbit IgG at 1/8000 dilution

Exposure time: 20 seconds



ELISA

Recommended dilution: 1000-10000

联系电话: 4008-898-798, 021-61725725

联系QQ: 2881505695, 2881505696

邮箱: mlbio_cn@yeah.net

网址: www.mlbio.cn