

Anti-CLDN7 antibody

Cat. No.	ml260406
Package	25 µl/100 µl/200 µl
Storage	-20°C, pH7.4 PBS, 0.05% NaN ₃ , 40% Glycerol

Product overview

Description	Anti-CLDN7 rabbit polyclonal antibody
Applications	ELISA, WB, IHC
Immunogen	Synthetic peptide of human CLDN7
Reactivity	Human, Mouse, Rat
Content	0.3 mg/ml
Host species	Rabbit
Ig class	Immunogen-specific rabbit IgG
Purification	Antigen affinity purification

Target information

Symbol	CLDN7
Full name	claudin 7

Synonyms CLDN-7, CEPTL2, CPETL2, Hs.84359, claudin-1

Swissprot O95471

Target Background

This gene encodes a member of the claudin family. Claudins are integral membrane proteins and components of tight junction strands. Tight junction strands serve as a physical barrier to prevent solutes and water from passing freely through the paracellular space between epithelial or endothelial cell sheets, and also play critical roles in maintaining cell polarity and signal transductions. Differential expression of this gene has been observed in different types of malignancies, including breast cancer, ovarian cancer, hepatocellular carcinomas, urinary tumors, prostate cancer, lung cancer, head and neck cancers, thyroid carcinomas, etc.. Alternatively spliced transcript variants encoding different isoforms have been found.

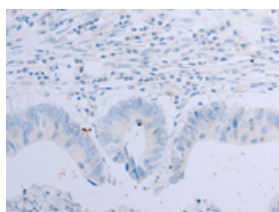
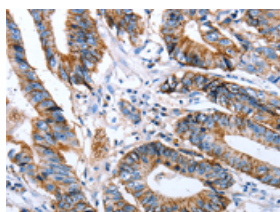
Applications

Immunohistochemistry

Predicted cell location: Cytoplasm, Cell membrane

Positive control: Human colon cancer

Recommended dilution: 50-150

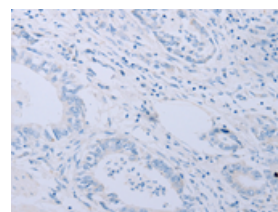
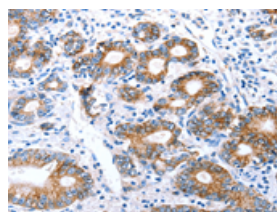


The image on the left is immunohistochemistry of paraffin-embedded Human colon cancer tissue using ml260406(CLDN7 Antibody) at dilution 1/50, on the right is treated with synthetic peptide. (Original magnification: $\times 200$)

Predicted cell location: Cytoplasm, Cell membrane

Positive control: Human stomach cancer

Recommended dilution: 50-150



The image on the left is immunohistochemistry of paraffin-embedded Human stomach cancer tissue using ml260406(CLDN7 Antibody) at dilution 1/50, on the right is treated with synthetic peptide. (Original magnification: $\times 200$)

Western blotting

Predicted band size: 23 kDa

Positive control: Human liver cancer tissue

Recommended dilution: 1000-3000

Gel: 10%SDS-PAGE

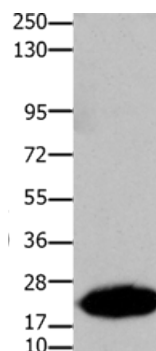
Lysate: 30 μ g

Lane: Human liver cancer tissue

Primary antibody: ml260406(CLDN7 Antibody) at dilution 1/1050

Secondary antibody: Goat anti rabbit IgG at 1/8000 dilution

Exposure time: 40 seconds



ELISA

Recommended dilution: 1000-10000

联系电话: 4008-898-798, 021-61725725

联系QQ: 2881505695, 2881505696

邮箱: mlbio_cn@yeah.net

网址: www.mlbio.cn