

Anti-GFRA1 antibody

Cat. No.	ml260424
Package	25 µl/100 µl/200 µl
Storage	-20°C, pH7.4 PBS, 0.05% NaN ₃ , 40% Glycerol

Product overview

Description	Anti-GFRA1 rabbit polyclonal antibody
Applications	ELISA, WB
Immunogen	Synthetic peptide of human GFRA1
Reactivity	Human, Mouse, Rat
Content	0.7 mg/ml
Host species	Rabbit
Ig class	Immunogen-specific rabbit IgG
Purification	Antigen affinity purification

Target information

Symbol	GFRA1
Full name	GDNF family receptor alpha 1
Synonyms	GDNFR, RET1L, RETL1, TRNR1, GDNFRA, GFR-ALPHA-1
Swissprot	P56159

Target Background

Glial cell line-derived neurotrophic factor (GDNF) and neurturin (NTN) are two structurally related, potent neurotrophic factors that play key roles in the control of neuron survival and differentiation. The protein encoded by this gene is a member of the GDNF receptor family. It is a glycosylphosphatidylinositol(GPI)-linked cell surface receptor for both GDNF and NTN, and mediates activation of the RET tyrosine kinase receptor. This gene is a candidate gene for Hirschsprung disease. Multiple alternatively spliced transcript variants have been described for this gene.

订购热线: 4008-898-798

Applications

Western blotting

Predicted band size: 51 kDa

Positive control: 293T cells

Recommended dilution: 1000-3000

Gel: 10% SDS-PAGE

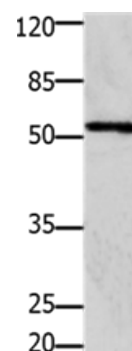
Lysate: 30 µg

Lane: 293T cells

Primary antibody: ml260424 (GFRA1 Antibody) at dilution 1/1250

Secondary antibody: Goat anti rabbit IgG at 1/8000 dilution

Exposure time: 1 minute



ELISA

Recommended dilution: 1000-10000

联系电话: 4008-898-798, 021-61725725

联系QQ: 2881505695, 2881505696

邮箱: mlbio_cn@yeah.net

网址: www.mlbio.cn