

Anti-GHSR antibody

Cat. No.	ml260429
Package	25 µl/100 µl/200 µl
Storage	-20°C, pH7.4 PBS, 0.05% NaN ₃ , 40% Glycerol

Product overview

Description	Anti-GHSR rabbit polyclonal antibody
Applications	ELISA, WB
Immunogen	Synthetic peptide of human GHSR
Reactivity	Human, Mouse, Rat
Content	0.5 mg/ml
Host species	Rabbit
Ig class	Immunogen-specific rabbit IgG
Purification	Antigen affinity purification

Target information

Symbol	GHSR
Full name	growth hormone secretagogue receptor
Synonyms	
Swissprot	Q92847

Target Background

This gene encodes a member of the G-protein coupled receptor family. The encoded protein may play a role in energy homeostasis and regulation of body weight. Two identified transcript variants are expressed in several tissues and are evolutionary conserved in fish and swine. One transcript, 1a, excises an intron and encodes the functional protein; this protein is the receptor for the Ghrelin ligand and defines a neuroendocrine pathway for growth hormone release. The second transcript (1b) retains the intron and does not function as a receptor for Ghrelin; however, it may function to attenuate activity of isoform 1a. Mutations in this gene are associated with autosomal idiopathic short stature.

订购热线: 4008-898-798

Applications

Western blotting

Predicted band size: 41 kDa

Positive control: 293T cells

Recommended dilution: 1000-3000

Gel: 10% SDS-PAGE

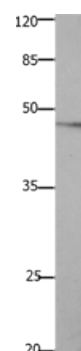
Lysate: 40 µg

Lane: 293T cells

Primary antibody: ml260429 (GHSR Antibody) at dilution 1/1000

Secondary antibody: Goat anti rabbit IgG at 1/8000 dilution

Exposure time: 5 minutes



ELISA

Recommended dilution: 1000-5000

联系电话: 4008-898-798, 021-61725725

联系QQ: 2881505695, 2881505696

邮箱: mlbio_cn@yeah.net

网址: www.mlbio.cn