

Anti-SLC2A3 antibody

Cat. No.	ml260435
Package	25 µl/100 µl/200 µl
Storage	-20°C, pH7.4 PBS, 0.05% NaN ₃ , 40% Glycerol

Product overview

Description	Anti-SLC2A3 rabbit polyclonal antibody
Applications	ELISA, WB
Immunogen	Synthetic peptide of human SLC2A3
Reactivity	Human
Content	0.3 mg/ml
Host species	Rabbit
Ig class	Immunogen-specific rabbit IgG
Purification	Antigen affinity purification

Target information

Symbol	SLC2A3
Full name	Solute carrier family 2 (facilitated glucose transporter), member 3
Synonyms	GLUT3
Swissprot	P11169

Target Background

Glucose transporter 3 (or GLUT3), also known as solute carrier family 2, facilitated glucose transporter member 3 (SLC2A3) is a protein that in humans is encoded by the SLC2A3 gene. GLUT3 facilitates the transport of glucose across the plasma membranes of mammalian cells. GLUT3 is most known for its specific expression in neurons and has originally been designated as the neuronal GLUT. GLUT3 has been studied in other cell types with specific glucose requirements, including sperm, preimplantation embryos, circulating white blood cells and carcinoma cell lines. GLUT3 has both a higher affinity for glucose and at least a fivefold greater transport capacity than GLUT1, GLUT2 and GLUT4, which is particularly significant for its role in neuronal glucose transport, where ambient glucose levels are fivefold lower than in serum.

订购热线: 4008-898-798

Applications

Western blotting

Predicted band size: 54 kDa

Positive control: Human colon cancer tissue

Recommended dilution: 500-2000

Gel: 10%SDS-PAGE

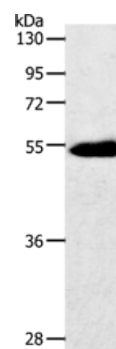
Lysate: 40 µg

Lane: Human colon cancer tissue

Primary antibody: ml260435(SLC2A3 Antibody) at dilution 1/400

Secondary antibody: Goat anti rabbit IgG at 1/8000 dilution

Exposure time: 2 minutes



ELISA

Recommended dilution: 2000-5000

联系电话: 4008-898-798, 021-61725725

联系QQ: 2881505695, 2881505696

邮箱: mlbio_cn@yeah.net

网址: www.mlbio.cn