

## Anti-ING1 antibody

<b>Cat. No.</b>	ml260514
<b>Package</b>	25 µl/100 µl/200 µl
<b>Storage</b>	-20°C, pH7.4 PBS, 0.05% NaN <sub>3</sub> , 40% Glycerol

### Product overview

<b>Description</b>	Anti-ING1 rabbit polyclonal antibody
<b>Applications</b>	ELISA, WB
<b>Immunogen</b>	Synthetic peptide of human ING1
<b>Reactivity</b>	Human, Mouse
<b>Content</b>	0.2 mg/ml
<b>Host species</b>	Rabbit
<b>Ig class</b>	Immunogen-specific rabbit IgG
<b>Purification</b>	Antigen affinity purification

### Target information

<b>Symbol</b>	ING1
<b>Full name</b>	inhibitor of growth family, member 1
<b>Synonyms</b>	p33; p47; p33ING1; p24ING1c; p33ING1b; p47ING1a
<b>Swissprot</b>	Q9UK53

### Target Background

This gene encodes a tumor suppressor protein that can induce cell growth arrest and apoptosis. The encoded protein is a nuclear protein that physically interacts with the tumor suppressor protein TP53 and is a component of the p53 signaling pathway. Reduced expression and rearrangement of this gene have been detected in various cancers. Multiple alternatively spliced transcript variants encoding distinct isoforms have been reported.

订购热线: 4008-898-798

## Applications

### Western blotting

Predicted band size: 47 kDa

Positive control: Mouse brain tissue and Jurkat cells, Raw264.7 and hepG2 cells

Recommended dilution: 100-500

Gel: 8%SDS-PAGE

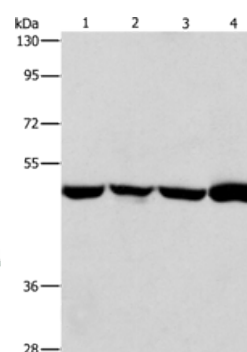
Lysate: 40 µg

Lane 1-4: Mouse brain tissue, Jurkat cells, Raw264.7 cells, hepG2 cells

Primary antibody: ml260514(ING1 Antibody) at dilution 1/53

Secondary antibody: Goat anti rabbit IgG at 1/8000 dilution

Exposure time: 1 second



### ELISA

Recommended dilution: 500-1000

联系电话: 4008-898-798, 021-61725725

联系QQ: 2881505695, 2881505696

邮箱: [mlbio\\_cn@yeah.net](mailto:mlbio_cn@yeah.net)

网址: [www.mlbio.cn](http://www.mlbio.cn)