

Anti-INHBB antibody

Cat. No.	ml260515
Package	25 µl/100 µl/200 µl
Storage	-20°C, pH7.4 PBS, 0.05% NaN ₃ , 40% Glycerol

Product overview

Description	Anti-INHBB rabbit polyclonal antibody
Applications	ELISA, WB, IHC
Immunogen	Synthetic peptide of human INHBB
Reactivity	Human, Mouse, Rat
Content	1 mg/ml
Host species	Rabbit
Ig class	Immunogen-specific rabbit IgG
Purification	Antigen affinity purification

Target information

Symbol	INHBB
Full name	inhibin, beta B

Synonyms

Swissprot P09529

Target Background

The inhibin beta B subunit joins the alpha subunit to form a pituitary FSH secretion inhibitor. Inhibin has been shown to regulate gonadal stromal cell proliferation negatively and to have tumour-suppressor activity. In addition, serum levels of inhibin have been shown to reflect the size of granulosa-cell tumors and can therefore be used as a marker for primary as well as recurrent disease. Because expression in gonadal and various extragonadal tissues may vary severalfold in a tissue-specific fashion, it is proposed that inhibin may be both a growth/differentiation factor and a hormone.

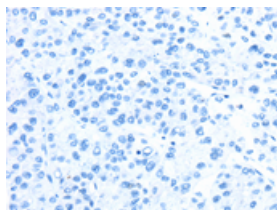
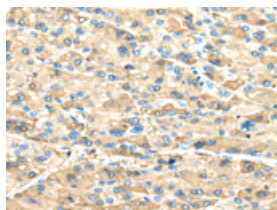
Applications

Immunohistochemistry

Predicted cell location: Cytoplasm and Cell membrane

Positive control: Human liver cancer

Recommended dilution: 30-150

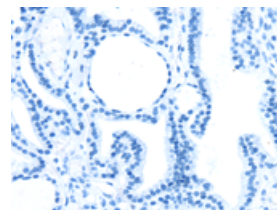
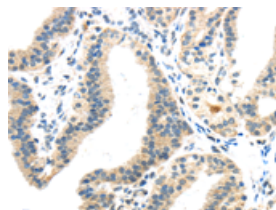


The image on the left is immunohistochemistry of paraffin-embedded Human liver cancer tissue using ml260515(INHBB Antibody) at dilution 1/40, on the right is treated with synthetic peptide. (Original magnification: $\times 200$)

Predicted cell location: Cytoplasm and Cell membrane

Positive control: Human thyroid cancer

Recommended dilution: 30-150



The image on the left is immunohistochemistry of paraffin-embedded Human thyroid cancer tissue using ml260515(INHBB Antibody) at dilution 1/40, on the right is treated with synthetic peptide. (Original magnification: $\times 200$)

Western blotting

Predicted band size: 45 kDa

Positive control: Mouse kidney tissue

Recommended dilution: 500-2000

Gel: 8%SDS-PAGE

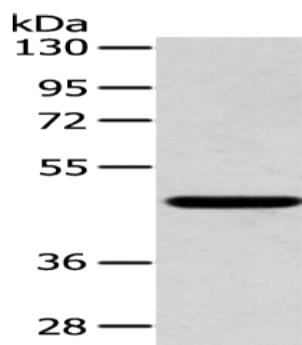
Lysate: 40 μ g

Lane: Mouse kidney tissue

Primary antibody: ml260515(INHBB Antibody) at dilution 1/400

Secondary antibody: Goat anti rabbit IgG at 1/8000 dilution

Exposure time: 5 seconds



ELISA

Recommended dilution: 2000-5000

联系电话: 4008-898-798, 021-61725725

联系QQ: 2881505695, 2881505696

邮箱: mlbio_cn@yeah.net

网址: www.mlbio.cn