

## Anti-KLF5 antibody

<b>Cat. No.</b>	ml260534
<b>Package</b>	25 µl/100 µl/200 µl
<b>Storage</b>	-20°C, pH7.4 PBS, 0.05% NaN <sub>3</sub> , 40% Glycerol

### Product overview

<b>Description</b>	Anti-KLF5 rabbit polyclonal antibody
<b>Applications</b>	ELISA, WB
<b>Immunogen</b>	Synthetic peptide of human KLF5
<b>Reactivity</b>	Human, Mouse
<b>Content</b>	0.2 mg/ml
<b>Host species</b>	Rabbit
<b>Ig class</b>	Immunogen-specific rabbit IgG
<b>Purification</b>	Antigen affinity purification

### Target information

<b>Symbol</b>	KLF5
<b>Full name</b>	Kruppel like factor 5
<b>Synonyms</b>	CKLF; IKLF; BTEB2
<b>Swissprot</b>	Q13887

### Target Background

This gene encodes a member of the Kruppel-like factor subfamily of zinc finger proteins. The encoded protein is a transcriptional activator that binds directly to a specific recognition motif in the promoters of target genes. This protein acts downstream of multiple different signaling pathways and is regulated by post-translational modification. It may participate in both promoting and suppressing cell proliferation. Expression of this gene may be changed in a variety of different cancers and in cardiovascular disease. Alternative splicing results in multiple transcript variants.

订购热线: 4008-898-798

#### Applications

##### Western blotting

Predicted band size: 51 kDa

Positive control: Human lymphoma, ovarian and colon cancer tissue

Recommended dilution: 500-2000

Gel: 10+12+15% SDS-PAGE

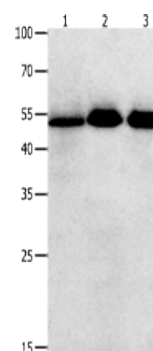
Lysate: 40 µg

Lane 1-3: Human lymphoma tissue, Human ovarian tissue,  
Human colon cancer tissue

Primary antibody: ml260534 (KLF5 Antibody) at dilution  
1/350

Secondary antibody: Goat anti rabbit IgG at 1/8000 dilution

Exposure time: 20 seconds



##### ELISA

Recommended dilution: 1000-5000

联系电话: 4008-898-798, 021-61725725

联系QQ: 2881505695, 2881505696

邮箱: [mlbio\\_cn@yeah.net](mailto:mlbio_cn@yeah.net)

网址: [www.mlbio.cn](http://www.mlbio.cn)