

Anti-KCNC1 antibody

| | |
|-----------------|---|
| Cat. No. | ml260540 |
| Package | 25 µl/100 µl/200 µl |
| Storage | -20°C, pH7.4 PBS, 0.05% NaN ₃ , 40% Glycerol |

Product overview

| | |
|---------------------|---------------------------------------|
| Description | Anti-KCNC1 rabbit polyclonal antibody |
| Applications | ELISA, WB, IHC |
| Immunogen | Synthetic peptide of human KCNC1 |
| Reactivity | Human, Mouse |
| Content | 0.2 mg/ml |
| Host species | Rabbit |
| Ig class | Immunogen-specific rabbit IgG |
| Purification | Antigen affinity purification |

Target information

| | |
|------------------|---|
| Symbol | KCNC1 |
| Full name | potassium voltage-gated channel, Shaw-related subfamily, member 1 |

Synonyms KV4, NGK2, KV3.1

Swissprot P48547

Target Background

The Shaker gene family of *Drosophila* encodes components of voltage-gated potassium channels and is comprised of four subfamilies. Based on sequence similarity, this gene is similar to one of these subfamilies, namely the Shaw subfamily. The protein encoded by this gene belongs to the delayed rectifier class of channel proteins and is an integral membrane protein that mediates the voltage-dependent potassium ion permeability of excitable membranes. Multiple transcript variants encoding different isoforms have been inferred for this gene based on orthologous loci.

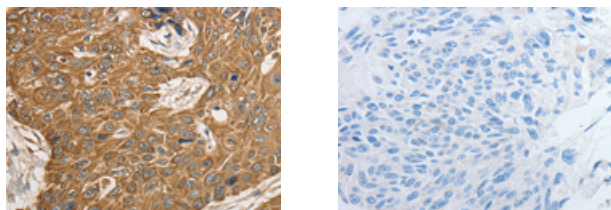
Applications

Immunohistochemistry

Predicted cell location: Cytoplasm, Cell membrane

Positive control: Human esophagus cancer

Recommended dilution: 25-100



The image on the left is immunohistochemistry of paraffin-embedded Human esophagus cancer tissue using ml260540(KCNC1 Antibody) at dilution 1/20, on the right is treated with synthetic peptide. (Original magnification: $\times 200$)

Western blotting

Predicted band size: 58 kDa

Positive control: Mouse liver tissue

Recommended dilution: 500-2000

Gel: 10%SDS-PAGE

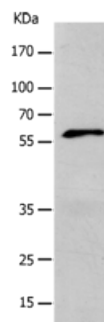
Lysate: 40 μ g

Lane: Mouse liver tissue

Primary antibody: ml260540(KCNC1 Antibody) at dilution 1/400

Secondary antibody: Goat anti rabbit IgG at 1/8000 dilution

Exposure time: 30 seconds



ELISA

Recommended dilution: 2000-5000

联系电话: 4008-898-798, 021-61725725

联系QQ: 2881505695, 2881505696

邮箱: mlbio_cn@yeah.net

网址: www.mlbio.cn