

Anti-KCNC4 antibody

Cat. No.	ml260541
Package	25 µl/100 µl/200 µl
Storage	-20°C, pH7.4 PBS, 0.05% NaN ₃ , 40% Glycerol

Product overview

Description	Anti-KCNC4 rabbit polyclonal antibody
Applications	ELISA, WB
Immunogen	Synthetic peptide of human KCNC4
Reactivity	Human, Mouse, Rat
Content	0.12 mg/ml
Host species	Rabbit
Ig class	Immunogen-specific rabbit IgG
Purification	Antigen affinity purification

Target information

Symbol	KCNC4
Full name	potassium voltage-gated channel subfamily C member 4
Synonyms	KV3.4; C1orf30; KSHIIIC; HKSHIIIC
Swissprot	Q03721

Target Background

The Shaker gene family of *Drosophila* encodes components of voltage-gated potassium channels and is comprised of four subfamilies. Based on sequence similarity, this gene is similar to the Shaw subfamily. The protein encoded by this gene belongs to the delayed rectifier class of channel proteins and is an integral membrane protein that mediates the voltage-dependent potassium ion permeability of excitable membranes. It generates atypical voltage-dependent transient current that may be important for neuronal excitability. Multiple transcript variants have been found for this gene.

订购热线: 4008-898-798

Applications

Western blotting

Predicted band size: 70 kDa

Positive control: HUVEC cell lysate

Recommended dilution: 200-1000

Gel: 8%SDS-PAGE

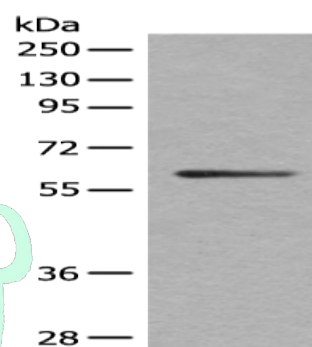
Lysate: 40 µg

Lane: HUVEC cell lysate

Primary antibody: ml260541(KCNC4 Antibody) at dilution 1/200

Secondary antibody: Goat anti rabbit IgG at 1/8000 dilution

Exposure time: 10 minutes



ELISA

Recommended dilution: 2000-5000

联系电话: 4008-898-798, 021-61725725

联系QQ: 2881505695, 2881505696

邮箱: mlbio_cn@yeah.net

网址: www.mlbio.cn