

Anti-STMN2/STMN3/STMN4 antibody

Cat. No.	ml260546
Package	25 µl/100 µl/200 µl
Storage	-20°C, pH7.4 PBS, 0.05% NaN ₃ , 40% Glycerol

Product overview

Description	Anti-STMN2/STMN3/STMN4 rabbit polyclonal antibody
Applications	ELISA, WB, IHC
Immunogen	Synthetic peptide of human STMN2/STMN3/STMN4
Reactivity	Human, Mouse
Content	0.4 mg/ml
Host species	Rabbit
Ig class	Immunogen-specific rabbit IgG
Purification	Antigen affinity purification

Target information

Symbol	STMN2/STMN3/STMN4
Full name	stathmin-like 2/2/3

Synonyms SCG10, SCGN10; SCLIP; RB3

Swissprot Q93045/Q9NZ72/Q9H169

Target Background

This gene encodes a member of the stathmin family of phosphoproteins. Stathmin proteins function in microtubule dynamics and signal transduction. The encoded protein plays a regulatory role in neuronal growth and is also thought to be involved in osteogenesis. Reductions in the expression of this gene have been associated with Down's syndrome and Alzheimer's disease. Alternatively spliced transcript variants have been observed for this gene. A pseudogene of this gene is located on the long arm of chromosome 6.

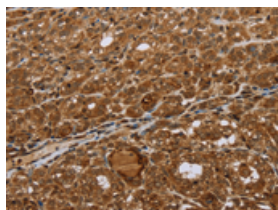
Applications

Immunohistochemistry

Predicted cell location: Cytoplasm

Positive control: Human thyroid cancer

Recommended dilution: 50-200

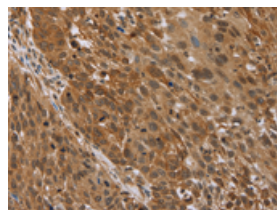


The image on the left is immunohistochemistry of paraffin-embedded Human thyroid cancer tissue using ml260546(STMN2/STMN3/STMN4 Antibody) at dilution 1/45, on the right is treated with synthetic peptide. (Original magnification: ×200)

Predicted cell location: Cytoplasm

Positive control: Human lung cancer

Recommended dilution: 50-200



The image on the left is immunohistochemistry of paraffin-embedded Human lung cancer tissue using ml260546(STMN2/STMN3/STMN4 Antibody) at dilution 1/45, on the right is treated with synthetic peptide. (Original magnification: ×200)

Western blotting

Predicted band size: 21 kDa

Positive control: Human liver cancer tissue

Recommended dilution: 500-2000

Gel: 10+12%SDS-PAGE

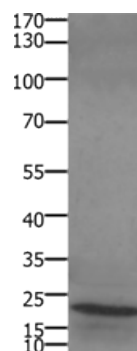
Lysate: 30 μ g

Lane: Human liver cancer tissue

Primary antibody: ml260546(STMN2/STMN3/STMN4 Antibody) at dilution 1/450

Secondary antibody: Goat anti rabbit IgG at 1/8000 dilution

Exposure time: 1 minute



ELISA

Recommended dilution: 1000-5000

联系电话: 4008-898-798, 021-61725725

联系QQ: 2881505695, 2881505696

邮箱: mlbio_cn@yeah.net

网址: www.mlbio.cn