

Anti-CHRNA3 antibody

Cat. No.	ml260644
Package	25 µl/100 µl/200 µl
Storage	-20°C, pH7.4 PBS, 0.05% NaN ₃ , 40% Glycerol

Product overview

Description	Anti-CHRNA3 rabbit polyclonal antibody
Applications	ELISA, WB, IHC
Immunogen	Synthetic peptide of human CHRNA3
Reactivity	Human, Mouse, Rat
Content	0.3 mg/ml
Host species	Rabbit
Ig class	Immunogen-specific rabbit IgG
Purification	Antigen affinity purification

Target information

Symbol	CHRNA3
Full name	cholinergic receptor, nicotinic, alpha 3 (neuronal)

Synonyms LNCR2, PAOD2, NACHRA3

Swissprot P32297

Target Background

This locus encodes a member of the nicotinic acetylcholine receptor family of proteins. Members of this family of proteins form pentameric complexes comprised of both alpha and beta subunits. This locus encodes an alpha-type subunit, as it contains characteristic adjacent cysteine residues. The encoded protein is a ligand-gated ion channel that likely plays a role in neurotransmission. Polymorphisms in this gene have been associated with an increased risk of smoking initiation and an increased susceptibility to lung cancer. Alternatively spliced transcript variants have been described.

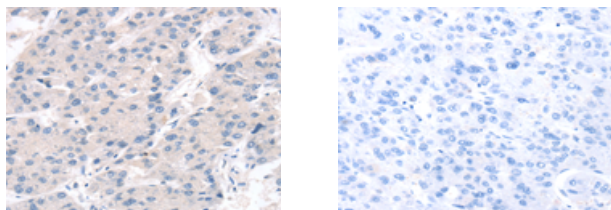
Applications

Immunohistochemistry

Predicted cell location: Cytoplasm

Positive control: Human ovarian cancer

Recommended dilution: 15-50



The image on the left is immunohistochemistry of paraffin-embedded Human ovarian cancer tissue using ml260644(CHRNA3 Antibody) at dilution 1/10, on the right is treated with synthetic peptide. (Original magnification: ×200)

Western blotting

Predicted band size: 55 kDa

Positive control: Hela cells

Recommended dilution: 1000-5000

Gel: 10%SDS-PAGE

Lysate: 40 μ g

Lane: Hela cells

Primary antibody: ml260644(CHRNA3 Antibody) at dilution 1/600

Secondary antibody: Goat anti rabbit IgG at 1/8000 dilution

Exposure time: 1 minute



ELISA

Recommended dilution: 2000-10000

联系电话: 4008-898-798, 021-61725725

联系QQ: 2881505695, 2881505696

邮箱: mlbio_cn@yeah.net

网址: www.mlbio.cn