

## Anti-MATR3 antibody

<b>Cat. No.</b>	ml222662
<b>Package</b>	25 µl/100 µl/200 µl
<b>Storage</b>	-20°C, pH7.4 PBS, 0.05% NaN <sub>3</sub> , 40% Glycerol

### Product overview

<b>Description</b>	Anti-MATR3 rabbit polyclonal antibody
<b>Applications</b>	ELISA, WB
<b>Immunogen</b>	Fusion protein of human MATR3
<b>Reactivity</b>	Human, Mouse
<b>Content</b>	0.1 mg/ml
<b>Host species</b>	Rabbit
<b>Ig class</b>	Immunogen-specific rabbit IgG
<b>Purification</b>	Antigen affinity purification

### Target information

<b>Symbol</b>	MATR3
<b>Full name</b>	matrin 3
<b>Synonyms</b>	MPD2; ALS21; VCPDM
<b>Swissprot</b>	P43243

### Target Background

This gene encodes a nuclear matrix protein, which is proposed to stabilize certain messenger RNA species. Mutations of this gene are associated with distal myopathy 2, which often includes vocal cord and pharyngeal weakness. Alternatively spliced transcript variants, including read-through transcripts composed of the upstream small nucleolar RNA host gene 4 (non-protein coding) and matrin 3 gene sequence, have been identified. Pseudogenes of this gene are located on chromosomes 1 and X.

订购热线: 4008-898-798

## Applications

### Western blotting

Predicted band size: 95 kDa

Positive control: NIH/3T3, 231, hela, K562 and 293T cells

Recommended dilution: 500-2000

Gel: 6%SDS-PAGE

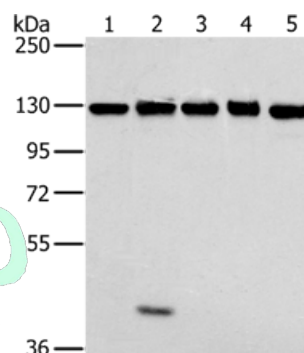
Lysate: 40 µg

Lane 1-5: NIH/3T3 cells, 231 cells, hela cells, K562 cells, 293T cells

Primary antibody: ml222662(MATR3 Antibody) at dilution 1/400

Secondary antibody: Goat anti rabbit IgG at 1/8000 dilution

Exposure time: 3 seconds



### ELISA

Recommended dilution: 2000-5000

联系电话: 4008-898-798, 021-61725725

联系QQ: 2881505695, 2881505696

邮箱: [mlbio\\_cn@yeah.net](mailto:mlbio_cn@yeah.net)

网址: [www.mlbio.cn](http://www.mlbio.cn)