

Anti-ZC3H12A antibody

Cat. No.	ml222666
Package	25 µl/100 µl/200 µl
Storage	-20°C, pH7.4 PBS, 0.05% NaN ₃ , 40% Glycerol

Product overview

Description	Anti-ZC3H12A rabbit polyclonal antibody
Applications	ELISA, WB, IHC
Immunogen	Fusion protein of human ZC3H12A
Reactivity	Human
Content	0.3 mg/ml
Host species	Rabbit
Ig class	Immunogen-specific rabbit IgG
Purification	Antigen affinity purification

Target information

Symbol	ZC3H12A
Full name	zinc finger CCCH-type containing 12A

Synonyms MCPIP; MCPIP1; dJ423B22.1

Swissprot Q5D1E8

Target Background

ZC3H12A is an MCP1 (CCL2; MIM 158105)-induced protein that acts as a transcriptional activator and causes cell death of cardiomyocytes, possibly via induction of genes associated with apoptosis.

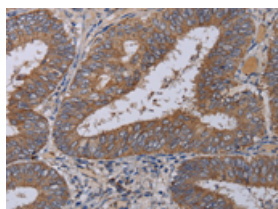
Applications

Immunohistochemistry

Predicted cell location: Cytoplasm

Positive control: Human colon cancer

Recommended dilution: 50-200

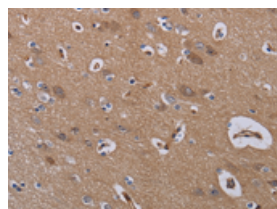


The image on the left is immunohistochemistry of paraffin-embedded Human colon cancer tissue using ml222666(ZC3H12A Antibody) at dilution 1/40, on the right is treated with fusion protein. (Original magnification: ×200)

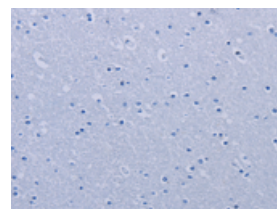
Predicted cell location: Cytoplasm

Positive control: Human brain

Recommended dilution: 50-200



The image on the left is immunohistochemistry of paraffin-embedded Human brain tissue using ml222666(ZC3H12A Antibody) at dilution 1/40, on the right is treated with fusion protein. (Original magnification: ×200)



Western blotting

Predicted band size: 66 kDa

Positive control: K562 cells

Recommended dilution: 500-2000

Gel: 6%SDS-PAGE

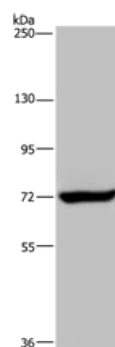
Lysate: 40 μ g

Lane: K562 cells

Primary antibody: ml222666(ZC3H12A Antibody) at dilution 1/200

Secondary antibody: Goat anti rabbit IgG at 1/8000 dilution

Exposure time: 20 seconds



ELISA

Recommended dilution: 2000-5000

联系电话: 4008-898-798, 021-61725725

联系QQ: 2881505695, 2881505696

邮箱: mlbio_cn@yeah.net

网址: www.mlbio.cn