

Anti-AKAP8 antibody

Cat. No.	ml260664
Package	25 µl/100 µl/200 µl
Storage	-20°C, pH7.4 PBS, 0.05% NaN ₃ , 40% Glycerol

Product overview

Description	Anti-AKAP8 rabbit polyclonal antibody
Applications	ELISA, WB, IHC
Immunogen	Synthetic peptide of human AKAP8
Reactivity	Human
Content	0.2 mg/ml
Host species	Rabbit
Ig class	Immunogen-specific rabbit IgG
Purification	Antigen affinity purification

Target information

Symbol	AKAP8
Full name	A kinase (PRKA) anchor protein 8

Synonyms AKAP-8, AKAP95, AKAP 95, AKAP-95

Swissprot O43823

Target Background

This gene encodes a member of the A-kinase anchor protein family. A-kinase anchor proteins are scaffold proteins that contain a binding domain for the RI/RII subunit of protein kinase A (PKA) and recruit PKA and other signaling molecules to specific subcellular locations. This gene encodes a nuclear A-kinase anchor protein that binds to the RII alpha subunit of PKA and may play a role in chromosome condensation during mitosis by targeting PKA and the condensin complex to chromatin. A pseudogene of this gene is located on the short arm of chromosome 9.

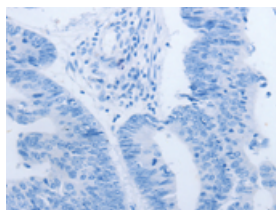
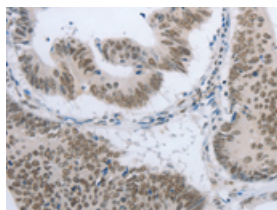
Applications

Immunohistochemistry

Predicted cell location: cytoplasm, Nucleus

Positive control: Human colon cancer

Recommended dilution: 25-100

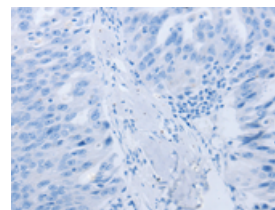
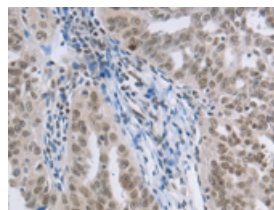


The image on the left is immunohistochemistry of paraffin-embedded Human colon cancer tissue using ml260664(AKAP8 Antibody) at dilution 1/15, on the right is treated with synthetic peptide. (Original magnification: ×200)

Predicted cell location: cytoplasm, Nucleus

Positive control: Human ovarian cancer

Recommended dilution: 25-100



The image on the left is immunohistochemistry of paraffin-embedded Human ovarian cancer tissue using ml260664(AKAP8 Antibody) at dilution 1/15, on the right is treated with synthetic peptide. (Original magnification: ×200)

Western blotting

Predicted band size: 76 kDa

Positive control: Hela and 293T cells

Recommended dilution: 500-2000

Gel: 10%SDS-PAGE

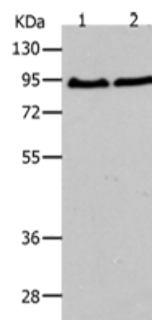
Lysate: 40 μ g

Lane 1-2: Hela cells, 293T cells

Primary antibody: ml260664(AKAP8 Antibody) at dilution 1/250

Secondary antibody: Goat anti rabbit IgG at 1/8000 dilution

Exposure time: 2 minutes



ELISA

Recommended dilution: 2000-5000

联系电话: 4008-898-798, 021-61725725

联系QQ: 2881505695, 2881505696

邮箱: mlbio_cn@yeah.net

网址: www.mlbio.cn