

Anti-P2RY2 antibody

Cat. No.	ml260683
Package	25 µl/100 µl/200 µl
Storage	-20°C, pH7.4 PBS, 0.05% NaN ₃ , 40% Glycerol

Product overview

Description	Anti-P2RY2 rabbit polyclonal antibody
Applications	ELISA, WB
Immunogen	Synthetic peptide of human P2RY2
Reactivity	Human
Content	0.7 mg/ml
Host species	Rabbit
Ig class	Immunogen-specific rabbit IgG
Purification	Antigen affinity purification

Target information

Symbol	P2RY2
Full name	purinergic receptor P2Y, G-protein coupled, 2
Synonyms	P2U, HP2U, P2U1, P2UR, P2Y2, P2RU1, P2Y2R
Swissprot	P41231

Target Background

The product of this gene belongs to the family of G-protein coupled receptors. This family has several receptor subtypes with different pharmacological selectivity, which overlaps in some cases, for various adenosine and uridine nucleotides. This receptor is responsive to both adenosine and uridine nucleotides. It may participate in control of the cell cycle of endometrial carcinoma cells. Three transcript variants encoding the same protein have been identified for this gene.

订购热线: 4008-898-798

Applications

Western blotting

Predicted band size: 42 kDa

Positive control: HT-29 cells

Recommended dilution: 1000-5000

Gel: 10% SDS-PAGE

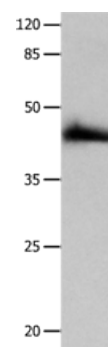
Lysate: 40 µg

Lane: HT29 cells

Primary antibody: ml260683 (P2RY2 Antibody) at dilution 1/1250

Secondary antibody: Goat anti rabbit IgG at 1/8000 dilution

Exposure time: 1 minute



ELISA

Recommended dilution: 2000-10000

联系电话: 4008-898-798, 021-61725725

联系QQ: 2881505695, 2881505696

邮箱: mlbio_cn@yeah.net

网址: www.mlbio.cn