

## Anti-ACTL8 antibody

<b>Cat. No.</b>	D221485
<b>Package</b>	25 µl/100 µl/200 µl
<b>Storage</b>	-20°C, pH7.4 PBS, 0.05% NaN <sub>3</sub> , 40% Glycerol

### Product overview

<b>Description</b>	Anti-ACTL8 rabbit polyclonal antibody
<b>Applications</b>	ELISA, WB, IHC
<b>Immunogen</b>	Fusion protein of human ACTL8
<b>Reactivity</b>	Human
<b>Content</b>	0.1 mg/ml
<b>Host species</b>	Rabbit
<b>Ig class</b>	Immunogen-specific rabbit IgG
<b>Purification</b>	Antigen affinity purification

### Target information

<b>Symbol</b>	ACTL8
<b>Full name</b>	Actin-like 8
<b>Synonyms</b>	CT57
<b>Swissprot</b>	Q9H568

### Target Background

This protein belongs to the actin family. Actin-like 8 is a protein in humans that is encoded by the ACTL8 gene. The high levels expression in testis and pancreas and weak expression in placenta. The subcellular location of this protein in cytoplasm, cytoskeleton.

订购热线: 4008-898-798

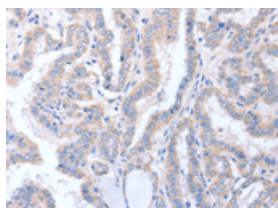
## Applications

### Immunohistochemistry

Predicted cell location: Cytoplasm

Positive control: Human thyroid cancer

Recommended dilution: 15-50

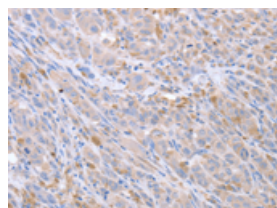


The image on the left is immunohistochemistry of paraffin-embedded Human thyroid cancer tissue using ml221485(CTL8 Antibody) at dilution 1/15, on the right is treated with fusion protein. (Original magnification:  $\times 200$ )

Predicted cell location: Cytoplasm

Positive control: Human lung cancer

Recommended dilution: 15-50



The image on the left is immunohistochemistry of paraffin-embedded Human lung cancer tissue using ml221485(CTL8 Antibody) at dilution 1/15, on the right is treated with fusion protein. (Original magnification:  $\times 200$ )

### Western blotting

Predicted band size: 41 kDa

Positive control: MCF7 cells

Recommended dilution: 500-2000

Gel: 10% SDS-PAGE

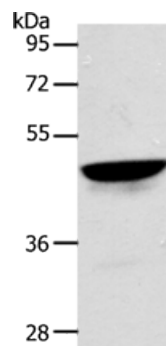
Lysate: 40  $\mu$ g

Lane: MCF7 cells

Primary antibody: ml221485(CTL8 Antibody) at dilution 1/300

Secondary antibody: Goat anti rabbit IgG at 1/8000 dilution

Exposure time: 5 seconds



### ELISA

Recommended dilution: 2000-5000

联系电话: 4008-898-798, 021-61725725

联系QQ: 2881505695, 2881505696

邮箱: [mlbio\\_cn@yeah.net](mailto:mlbio_cn@yeah.net)

网址: [www.mlbio.cn](http://www.mlbio.cn)