

Anti-PRDX1 antibody

Cat. No.	ml260717
Package	25 µl/100 µl/200 µl
Storage	-20°C, pH7.4 PBS, 0.05% NaN ₃ , 40% Glycerol

Product overview

Description	Anti-PRDX1 rabbit polyclonal antibody
Applications	ELISA, WB, IHC
Immunogen	Synthetic peptide of human PRDX1
Reactivity	Human, Mouse, Rat
Content	0.3 mg/ml
Host species	Rabbit
Ig class	Immunogen-specific rabbit IgG
Purification	Antigen affinity purification

Target information

Symbol	PRDX1
Full name	peroxiredoxin 1

Synonyms	PAG, PAGA, PAGB, PRX1, PRXI, MSP23, NKEFA, TDPX2, NKEF-A
Swissprot	Q06830

Target Background

This gene encodes a member of the peroxiredoxin family of antioxidant enzymes, which reduce hydrogen peroxide and alkyl hydroperoxides. The encoded protein may play an antioxidant protective role in cells, and may contribute to the antiviral activity of CD8(+) T-cells. This protein may have a proliferative effect and play a role in cancer development or progression. Four transcript variants encoding the same protein have been identified for this gene.

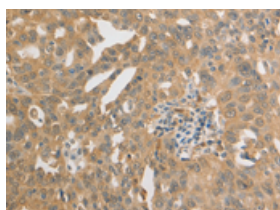
Applications

Immunohistochemistry

Predicted cell location: Cytoplasm

Positive control: Human ovarian cancer

Recommended dilution: 25-100

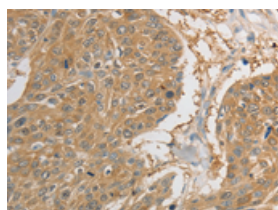


The image on the left is immunohistochemistry of paraffin-embedded Human ovarian cancer tissue using ml260717(PRDX1 Antibody) at dilution 1/20, on the right is treated with synthetic peptide. (Original magnification: $\times 200$)

Predicted cell location: Cytoplasm

Positive control: Human esophagus cancer

Recommended dilution: 25-100



The image on the left is immunohistochemistry of paraffin-embedded Human esophagus cancer tissue using ml260717(PRDX1 Antibody) at dilution 1/20, on the right is treated with synthetic peptide. (Original magnification: $\times 200$)

Western blotting

Predicted band size: 22 kDa

Positive control: Mouse liver and kidney tissue, NIH/3T3 and RAW264.7 cells, human fetal brain tissue, 293T, K562, Jurkat and hela cells

Recommended dilution: 200-1000

订购热线: 4008-898-798

Gel: 12%SDS-PAGE

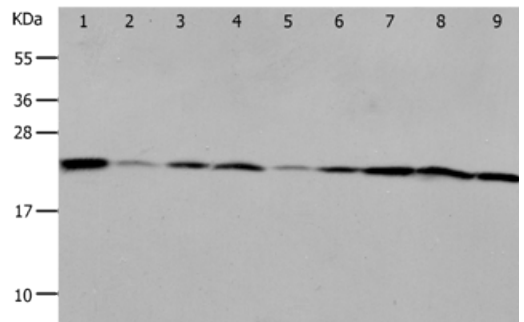
Lysate: 40 µg

Lane 1-9: Mouse liver tissue, Mouse kidney tissue, NIH/3T3 cells, RAW264.7 cells, human fetal brain tissue, 293T cells, K562 cells, Jurkat cells, Hela cells

Primary antibody: ml260717(PRD1 Antibody) at dilution 1/400

Secondary antibody: Goat anti rabbit IgG at 1/8000 dilution

Exposure time: 50 seconds



ELISA

Recommended dilution: 1000-2000

联系电话: 4008-898-798, 021-61725725

联系QQ: 2881505695, 2881505696

邮箱: mlbio_cn@yeah.net

网址: www.mlbio.cn